

A5441

Leader in Biomolecular Solutions for Life Science



PI3 Rabbit pAb

Catalog No.: A5441

2 Publications

Basic Information

Observed MW

12kDa

Calculated MW

12kDa

Category

Polyclonal Antibody

Applications

WB,IHC-P,ELISA

Cross-Reactivity

Human,Mouse

Background

This gene encodes an elastase-specific inhibitor that functions as an antimicrobial peptide against Gram-positive and Gram-negative bacteria, and fungal pathogens. The protein contains a WAP-type four-disulfide core (WFDC) domain, and is thus a member of the WFDC domain family. Most WFDC gene members are localized to chromosome 20q12-q13 in two clusters: centromeric and telomeric. This gene belongs to the centromeric cluster. Expression of this gene is upregulated by bacterial lipopolysaccharides and cytokines.

Recommended Dilutions

WB 1:500 - 1:2000

IHC-P 1:100 - 1:200

ELISA Recommended starting concentration is 1 µg/mL. Please optimize the concentration based on your specific assay requirements.

Immunogen Information

Gene ID

5266

Swiss Prot

P19957

Immunogen

Recombinant protein (or fragment). This information is considered to be commercially sensitive.

Synonyms

ESI; WAP3; SKALP; WFDC14; cementoin; PI3

Contact



www.abclonal.com

Product Information

Source

Rabbit

Isotype

IgG

Purification

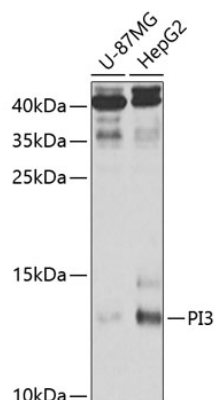
Affinity purification

Storage

Store at -20°C. Avoid freeze / thaw cycles.

Buffer: PBS with 0.02% sodium azide, 50% glycerol, pH7.3.

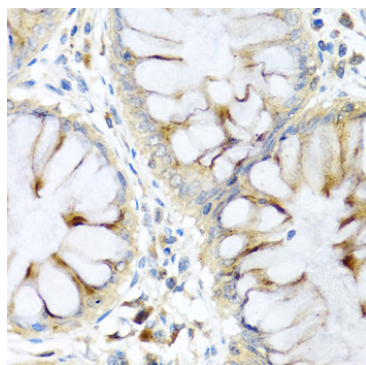
Validation Data



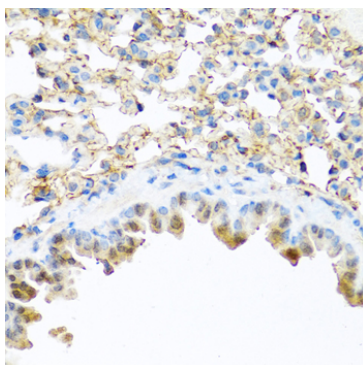
Western blot analysis of various lysates using PI3 Rabbit pAb (A5441) at 1:1000 dilution. Secondary antibody: HRP-conjugated Goat anti-Rabbit IgG (H+L) (AS014) at 1:10000 dilution.

Lysates/proteins: 25µg per lane.

Blocking buffer: 3% nonfat dry milk in TBST.



Immunohistochemistry analysis of paraffin-embedded Human colon using PI3 Rabbit pAb (A5441) at dilution of 1:100 (40x lens). Microwave antigen retrieval performed with 0.01M PBS Buffer (pH 7.2) prior to IHC staining.



Immunohistochemistry analysis of paraffin-embedded Mouse lung using PI3 Rabbit pAb (A5441) at dilution of 1:100 (40x lens). Microwave antigen retrieval performed with 0.01M PBS Buffer (pH 7.2) prior to IHC staining.