

A5458

Leader in Biomolecular Solutions for Life Science



## CPE Rabbit pAb

Catalog No.: A5458

### Basic Information

#### Observed MW

53-55kDa

#### Calculated MW

53kDa

#### Category

Polyclonal Antibody

#### Applications

WB, ELISA

#### Cross-Reactivity

Human, Mouse

### Background

This gene encodes a member of the M14 family of metallopeptidases. The encoded preproprotein is proteolytically processed to generate the mature peptidase. This peripheral membrane protein cleaves C-terminal amino acid residues and is involved in the biosynthesis of peptide hormones and neurotransmitters, including insulin. This protein may also function independently of its peptidase activity, as a neurotrophic factor that promotes neuronal survival, and as a sorting receptor that binds to regulated secretory pathway proteins, including prohormones. Mutations in this gene are implicated in type 2 diabetes.

### Recommended Dilutions

**WB** 1:500 - 1:2000

**ELISA** Recommended starting concentration is 1 µg/mL. Please optimize the concentration based on your specific assay requirements.

### Immunogen Information

#### Gene ID

1363

#### Swiss Prot

P16870

#### Immunogen

Recombinant protein (or fragment). This information is considered to be commercially sensitive.

#### Synonyms

CPH; BDVS; IDDHH; CPE

### Contact

 [www.abclonal.com](http://www.abclonal.com)

### Product Information

#### Source

Rabbit

#### Isotype

IgG

#### Purification

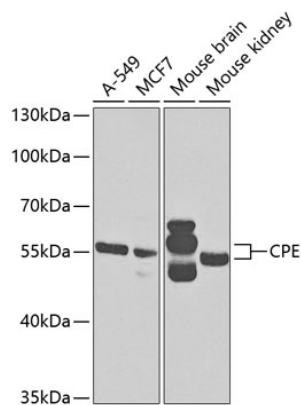
Affinity purification

#### Storage

Store at -20°C. Avoid freeze / thaw cycles.

Buffer: PBS with 0.02% sodium azide, 50% glycerol, pH 7.3.

## Validation Data



Western blot analysis of various lysates using CPE Rabbit pAb (A5458) at 1:1000 dilution.  
Secondary antibody: HRP-conjugated Goat anti-Rabbit IgG (H+L) (AS014) at 1:10000 dilution.  
Lysates/proteins: 25µg per lane.  
Blocking buffer: 3% nonfat dry milk in TBST.  
Detection: ECL Basic Kit (RM00020).  
Exposure time: 30s.