

A5560

Leader in Biomolecular Solutions for Life Science



CDC5L Rabbit pAb

Catalog No.: A5560

2 Publications

Basic Information

Observed MW

107kDa

Calculated MW

92kDa

Category

Polyclonal Antibody

Applications

WB,ELISA

Cross-Reactivity

Human,Mouse

Background

The protein encoded by this gene shares a significant similarity with *Schizosaccharomyces pombe* cdc5 gene product, which is a cell cycle regulator important for G2/M transition. This protein has been demonstrated to act as a positive regulator of cell cycle G2/M progression. It was also found to be an essential component of a non-snRNA spliceosome, which contains at least five additional protein factors and is required for the second catalytic step of pre-mRNA splicing.

Recommended Dilutions

WB 1:500 - 1:2000

ELISA Recommended starting concentration is 1 µg/mL. Please optimize the concentration based on your specific assay requirements.

Immunogen Information

Gene ID

988

Swiss Prot

Q99459

Immunogen

Recombinant protein (or fragment). This information is considered to be commercially sensitive.

Synonyms

CDC5; CEF1; PCDC5RP; CDC5-LIKE; dJ319D22.1; CDC5L

Contact



www.abclonal.com

Product Information

Source

Rabbit

Isotype

IgG

Purification

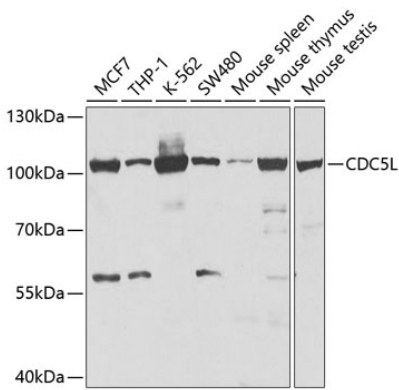
Affinity purification

Storage

Store at -20°C. Avoid freeze / thaw cycles.

Buffer: PBS with 0.02% sodium azide, 50% glycerol, pH7.3.

Validation Data



Western blot analysis of various lysates using CDC5L Rabbit pAb (A5560) at 1:1000 dilution.
Secondary antibody: HRP-conjugated Goat anti-Rabbit IgG (H+L) (AS014) at 1:10000 dilution.
Lysates/proteins: 25µg per lane.
Blocking buffer: 3% nonfat dry milk in TBST.