

A5561

Leader in Biomolecular Solutions for Life Science



## L-Plastin/LCP1 Rabbit pAb

Catalog No.: A5561

2 Publications

### Basic Information

#### Observed MW

70kDa

#### Calculated MW

70kDa

#### Category

Polyclonal Antibody

#### Applications

WB,IP,ELISA

#### Cross-Reactivity

Human,Mouse

### Background

Plastins are a family of actin-binding proteins that are conserved throughout eukaryote evolution and expressed in most tissues of higher eukaryotes. In humans, two ubiquitous plastin isoforms (L and T) have been identified. Plastin 1 (otherwise known as Fimbrin) is a third distinct plastin isoform which is specifically expressed at high levels in the small intestine. The L isoform is expressed only in hemopoietic cell lineages, while the T isoform has been found in all other normal cells of solid tissues that have replicative potential (fibroblasts, endothelial cells, epithelial cells, melanocytes, etc.). However, L-plastin has been found in many types of malignant human cells of non-hemopoietic origin suggesting that its expression is induced accompanying tumorigenesis in solid tissues.

### Recommended Dilutions

**WB** 1:500 - 1:2000

**IP** 0.5µg-4µg antibody for  
200µg-400µg extracts  
of whole cells

**ELISA** Recommended starting  
concentration is 1  
µg/mL. Please optimize  
the concentration  
based on your specific  
assay requirements.

### Immunogen Information

#### Gene ID

3936

#### Swiss Prot

P13796

#### Immunogen

Recombinant protein (or fragment). This information is considered to be commercially sensitive.

#### Synonyms

LPL; CP64; PLS2; LC64P; HEL-S-37; L-PLASTIN; L-Plastin/LCP1

### Product Information

#### Source

Rabbit

#### Isotype

IgG

#### Purification

Affinity purification

#### Storage

Store at -20°C. Avoid freeze / thaw cycles.

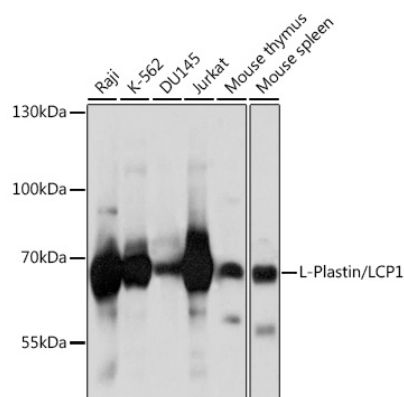
Buffer: PBS with 0.01% thimerosal, 50% glycerol, pH7.3.

### Contact



[www.abclonal.com](http://www.abclonal.com)

## Validation Data



Western blot analysis of various lysates using L-Plastin/LCP1 Rabbit pAb (A5561) at 1:1000 dilution.

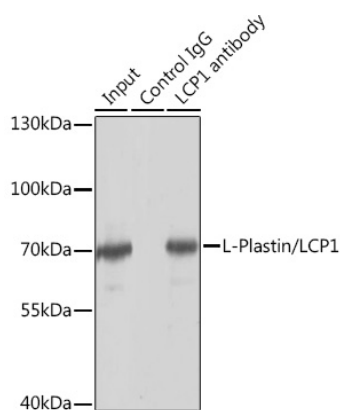
Secondary antibody: HRP-conjugated Goat anti-Rabbit IgG (H+L) (AS014) at 1:10000 dilution.

Lysates/proteins: 25µg per lane.

Blocking buffer: 3% nonfat dry milk in TBST.

Detection: ECL Basic Kit (RM00020).

Exposure time: 5s.



Immunoprecipitation analysis of 150 µg extracts of Jurkat cells using 3 µg L-

Plastin/LCP1 antibody (A5561). Western blot was performed from the

immunoprecipitate using L-Plastin/LCP1 antibody (A5561) at a dilution of 1:1000.