

A5583

Leader in Biomolecular Solutions for Life Science



# SLC8A1 Rabbit pAb

Catalog No.: A5583

3 Publications

## Basic Information

### Observed MW

100kDa

### Calculated MW

109kDa

### Category

Polyclonal Antibody

### Applications

WB,IHC-P,ELISA

### Cross-Reactivity

Human,Mouse,Rat

## Background

In cardiac myocytes,  $\text{Ca}^{2+}$  concentrations alternate between high levels during contraction and low levels during relaxation. The increase in  $\text{Ca}^{2+}$  concentration during contraction is primarily due to release of  $\text{Ca}^{2+}$  from intracellular stores. However, some  $\text{Ca}^{2+}$  also enters the cell through the sarcolemma (plasma membrane). During relaxation,  $\text{Ca}^{2+}$  is sequestered within the intracellular stores. To prevent overloading of intracellular stores, the  $\text{Ca}^{2+}$  that entered across the sarcolemma must be extruded from the cell. The  $\text{Na}^{+}$ - $\text{Ca}^{2+}$  exchanger is the primary mechanism by which the  $\text{Ca}^{2+}$  is extruded from the cell during relaxation. In the heart, the exchanger may play a key role in digitalis action. The exchanger is the dominant mechanism in returning the cardiac myocyte to its resting state following excitation.

## Recommended Dilutions

WB 1:2000 - 1:6000

IHC-P 1:50 - 1:200

ELISA Recommended starting concentration is 1  $\mu\text{g/mL}$ . Please optimize the concentration based on your specific assay requirements.

## Immunogen Information

### Gene ID

6546

### Swiss Prot

P32418

### Immunogen

Recombinant protein (or fragment). This information is considered to be commercially sensitive.

### Synonyms

NCX1; SLC8A1

## Contact

 [www.abclonal.com](http://www.abclonal.com)

## Product Information

### Source

Rabbit

### Isotype

IgG

### Purification

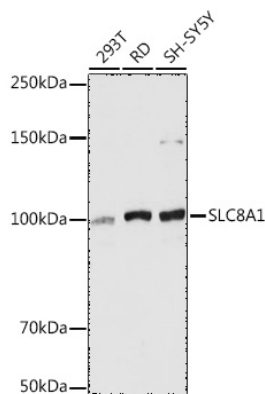
Affinity purification

### Storage

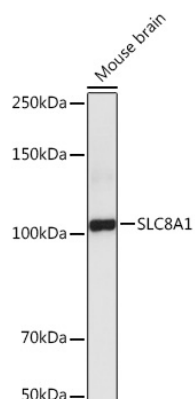
Store at  $-20^{\circ}\text{C}$ . Avoid freeze / thaw cycles.

Buffer: PBS with 0.01% thimerosal, 50% glycerol, pH7.3.

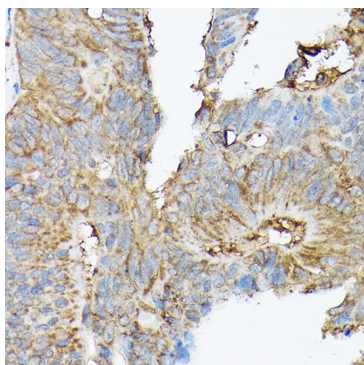
## Validation Data



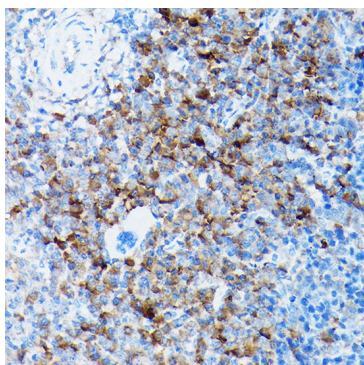
Western blot analysis of various lysates using SLC8A1 Rabbit pAb (A5583) at 1:5000 dilution.  
 Secondary antibody: HRP-conjugated Goat anti-Rabbit IgG (H+L) (AS014) at 1:10000 dilution.  
 Lysates/proteins: 25µg per lane.  
 Blocking buffer: 3% nonfat dry milk in TBST.  
 Detection: ECL Basic Kit (RM00020).  
 Exposure time: 1s.



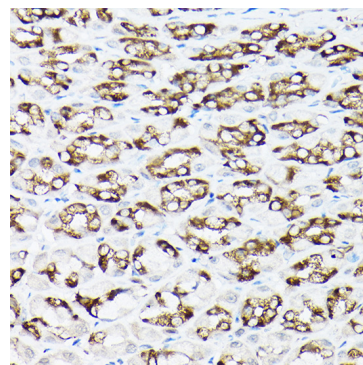
Western blot analysis of lysates from Mouse brain, using SLC8A1 Rabbit pAb (A5583) at 1:5000 dilution.  
 Secondary antibody: HRP-conjugated Goat anti-Rabbit IgG (H+L) (AS014) at 1:10000 dilution.  
 Lysates/proteins: 25µg per lane.  
 Blocking buffer: 3% nonfat dry milk in TBST.  
 Detection: ECL Basic Kit (RM00020).  
 Exposure time: 60s.



Immunohistochemistry analysis of paraffin-embedded Human colon carcinoma using SLC8A1 Rabbit pAb (A5583) at dilution of 1:100 (40x lens). High pressure antigen retrieval performed with 0.01M Citrate buffer (pH 6.0) prior to IHC staining.



Immunohistochemistry analysis of paraffin-embedded Mouse spleen using SLC8A1 Rabbit pAb (A5583) at dilution of 1:100 (40x lens). High pressure antigen retrieval performed with 0.01M Citrate buffer (pH 6.0) prior to IHC staining.



Immunohistochemistry analysis of paraffin-embedded Rat stomach using SLC8A1 Rabbit pAb (A5583) at dilution of 1:100 (40x lens). High pressure antigen retrieval performed with 0.01M Citrate buffer (pH 6.0) prior to IHC staining.