

A5618

Leader in Biomolecular Solutions for Life Science



## LC3A/LC3B Rabbit pAb

Catalog No.: A5618

47 Publications

### Basic Information

#### Observed MW

14kDa/16kDa

#### Calculated MW

14kDa

#### Category

Polyclonal Antibody

#### Applications

WB,IHC-P,IF/ICC,ELISA

#### Cross-Reactivity

Human,Mouse,Rat

### Background

MAP1A and MAP1B are microtubule-associated proteins which mediate the physical interactions between microtubules and components of the cytoskeleton. MAP1A and MAP1B each consist of a heavy chain subunit and multiple light chain subunits. The protein encoded by this gene is one of the light chain subunits and can associate with either MAP1A or MAP1B. Two transcript variants encoding different isoforms have been found for this gene. The expression of variant 1 is suppressed in many tumor cell lines, suggesting that may be involved in carcinogenesis.

### Recommended Dilutions

**WB** 1:500 - 1:2000

**IHC-P** 1:50 - 1:200

**IF/ICC** 1:50 - 1:200

**ELISA** Recommended starting concentration is 1 µg/mL. Please optimize the concentration based on your specific assay requirements.

### Immunogen Information

#### Gene ID

84557/81631

#### Swiss Prot

Q9GZQ8/Q9H492

#### Immunogen

Synthetic peptide. This information is considered to be commercially sensitive.

#### Synonyms

MAP1LC3B; ATG8F; LC3B; MAP1A/1BLC3; MAP1LC3B-a; MAP1LC3A; ATG8E; LC3; LC3A; MAP1ALC3; MAP1BLC3; LC3A/LC3B

### Product Information

#### Source

Rabbit

#### Isotype

IgG

#### Purification

Affinity purification

#### Storage

Store at -20°C. Avoid freeze / thaw cycles.

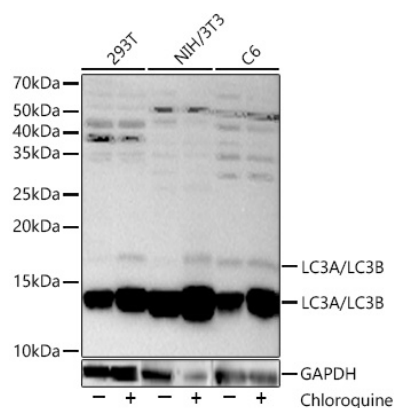
Buffer: PBS with 0.09% Sodium azide,50% glycerol,pH7.3.

### Contact



[www.abclonal.com](http://www.abclonal.com)

## Validation Data



Western blot analysis of various lysates, using LC3A/LC3B Rabbit pAb (A5618) at 1:2000 dilution. 293T, NIH/3T3 and C6 cells were treated with Chloroquine (50  $\mu$ M) at 37°C for 20 hours.

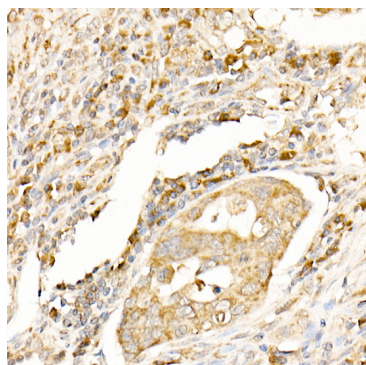
Secondary antibody: HRP-conjugated Goat anti-Rabbit IgG (H+L) (AS014) at 1:10000 dilution.

Lysates/proteins: 25 $\mu$ g per lane.

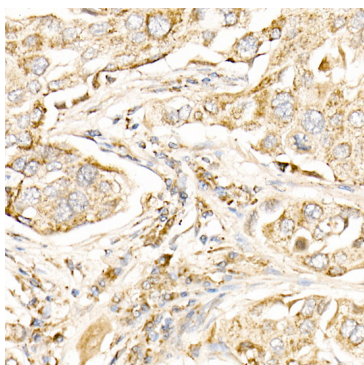
Blocking buffer: 3% nonfat dry milk in TBST.

Detection: ECL Basic Kit (RM00020).

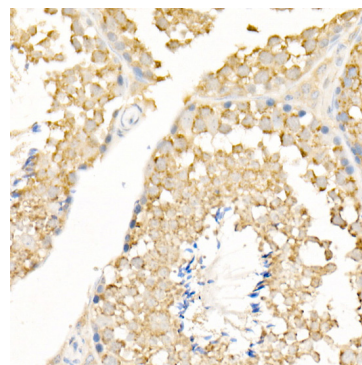
Exposure time: 30s.



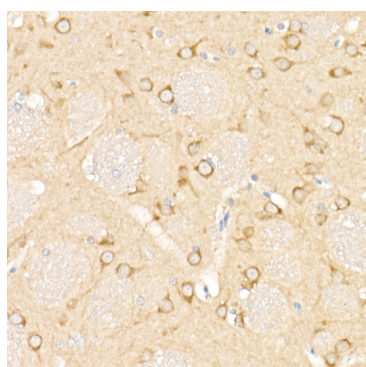
Immunohistochemistry analysis of paraffin-embedded Human colon carcinoma using LC3A/LC3B Rabbit pAb (A5618) at dilution of 1:100 (40x lens). High pressure antigen retrieval performed with 0.01M Citrate buffer (pH 6.0) prior to IHC staining.



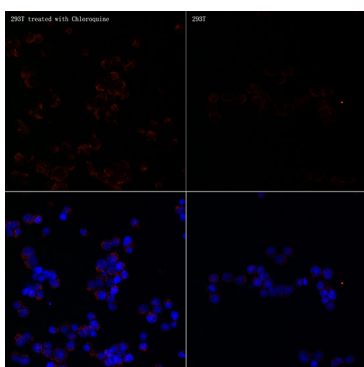
Immunohistochemistry analysis of paraffin-embedded Human lung cancer using LC3A/LC3B Rabbit pAb (A5618) at dilution of 1:100 (40x lens). High pressure antigen retrieval performed with 0.01M Citrate buffer (pH 6.0) prior to IHC staining.



Immunohistochemistry analysis of paraffin-embedded Mouse testis using LC3A/LC3B Rabbit pAb (A5618) at dilution of 1:100 (40x lens). High pressure antigen retrieval performed with 0.01M Citrate buffer (pH 6.0) prior to IHC staining.



Immunohistochemistry analysis of paraffin-embedded Rat brain using LC3A/LC3B Rabbit pAb (A5618) at dilution of 1:100 (40x lens). High pressure antigen retrieval performed with 0.01M Citrate buffer (pH 6.0) prior to IHC staining.



Immunofluorescence analysis of 293T Treated with Chloroquine and 293T cells using LC3A/LC3B Rabbit pAb (A5618) at dilution of 1:100 (40x lens). Secondary antibody: Cy3-conjugated Goat anti-Rabbit IgG (H+L) (AS007) at 1:500 dilution. Blue: DAPI for nuclear staining.