

A5776

Leader in Biomolecular Solutions for Life Science



NUDEL/NDEL1 Rabbit pAb

Catalog No.: A5776

1 Publications

Basic Information

Observed MW

39kDa

Calculated MW

38kDa

Category

Polyclonal Antibody

Applications

WB,ELISA

Cross-Reactivity

Human,Mouse

Background

Enables identical protein binding activity. Involved in chromosome segregation; positive regulation of GTPase activity; and regulation of intracellular protein transport. Located in kinetochore. Biomarker of schizophrenia.

Recommended Dilutions

WB 1:500 - 1:2000

ELISA Recommended starting concentration is 1 µg/mL. Please optimize the concentration based on your specific assay requirements.

Immunogen Information

Gene ID

81565

Swiss Prot

Q9GZM8

Immunogen

Recombinant protein (or fragment). This information is considered to be commercially sensitive.

Synonyms

EOPA; NDE2; NUDEL; MITAP1; NDE1L1; NUDEL/NDEL1

Contact

 www.abclonal.com

Product Information

Source

Rabbit

Isotype

IgG

Purification

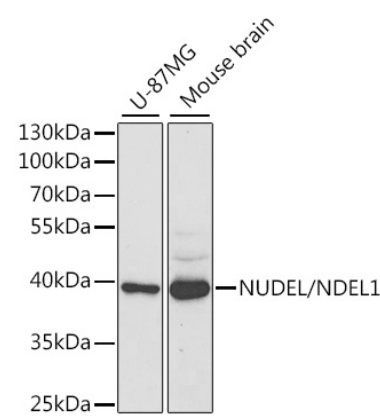
Affinity purification

Storage

Store at -20°C. Avoid freeze / thaw cycles.

Buffer: PBS with 0.02% sodium azide, 50% glycerol, pH 7.3.

Validation Data



Western blot analysis of various lysates using NUDEL/NDEL1 Rabbit pAb (A5776) at 1:1000 dilution.
Secondary antibody: HRP-conjugated Goat anti-Rabbit IgG (H+L) (AS014) at 1:10000 dilution.
Lysates/proteins: 25µg per lane.
Blocking buffer: 3% nonfat dry milk in TBST.
Detection: ECL Basic Kit (RM00020).
Exposure time: 90s.