

A5795

Leader in Biomolecular Solutions for Life Science



Cortactin Rabbit pAb

Catalog No.: A5795

1 Publications

Basic Information

Observed MW

80kDa

Calculated MW

62kDa

Category

Polyclonal Antibody

Applications

WB,IF/ICC,ELISA

Cross-Reactivity

Human,Mouse,Rat

Background

This gene is overexpressed in breast cancer and squamous cell carcinomas of the head and neck. The encoded protein is localized in the cytoplasm and in areas of the cell-substratum contacts. This gene has two roles: (1) regulating the interactions between components of adherens-type junctions and (2) organizing the cytoskeleton and cell adhesion structures of epithelia and carcinoma cells. During apoptosis, the encoded protein is degraded in a caspase-dependent manner. The aberrant regulation of this gene contributes to tumor cell invasion and metastasis. Three splice variants that encode different isoforms have been identified for this gene.

Recommended Dilutions

WB 1:500 - 1:1000

IF/ICC 1:50 - 1:200

ELISA Recommended starting concentration is 1 µg/mL. Please optimize the concentration based on your specific assay requirements.

Immunogen Information

Gene ID

2017

Swiss Prot

Q14247

Immunogen

Recombinant protein (or fragment). This information is considered to be commercially sensitive.

Synonyms

EMS1; Cortactin

Contact

 www.abclonal.com

Product Information

Source

Rabbit

Isotype

IgG

Purification

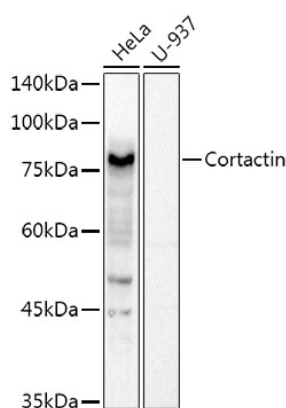
Affinity purification

Storage

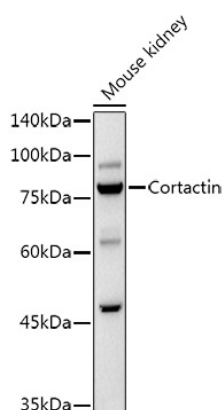
Store at -20°C. Avoid freeze / thaw cycles.

Buffer: PBS containing 50% glycerol, preserved with proclin300 or sodium azide (as specified on the Certificate of Analysis), pH 7.3.

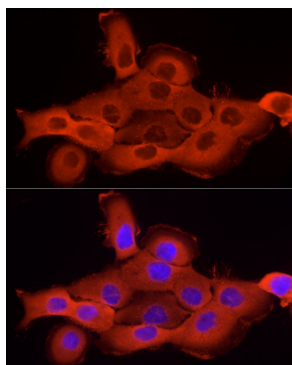
Validation Data



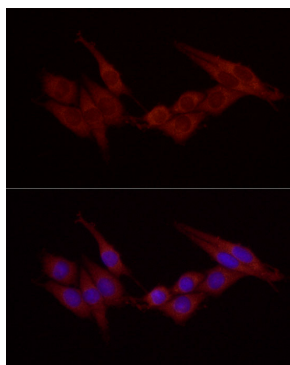
Western blot analysis of various lysates using Cortactin Rabbit pAb (A5795) at 1:1000 dilution.
 Secondary antibody: HRP-conjugated Goat anti-Rabbit IgG (H+L) (AS014) at 1:10000 dilution.
 Lysates/proteins: 25µg per lane.
 Blocking buffer: 3% nonfat dry milk in TBST.
 Detection: ECL Basic Kit (RM00020).
 Exposure time: 0.5s.



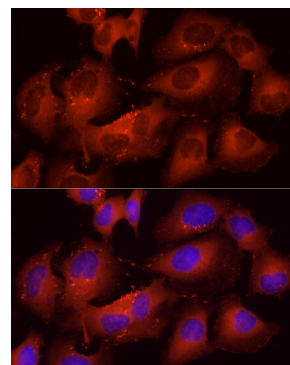
Western blot analysis of lysates from Mouse kidney, using Cortactin Rabbit pAb (A5795) at 1:1000 dilution.
 Secondary antibody: HRP-conjugated Goat anti-Rabbit IgG (H+L) (AS014) at 1:10000 dilution.
 Lysates/proteins: 25µg per lane.
 Blocking buffer: 3% nonfat dry milk in TBST.
 Detection: ECL Basic Kit (RM00020).
 Exposure time: 10s.



Immunofluorescence analysis of A-431 using Cortactin Rabbit pAb (A5795) at dilution of 1:25 (40x lens).
 Blue: DAPI for nuclear staining.

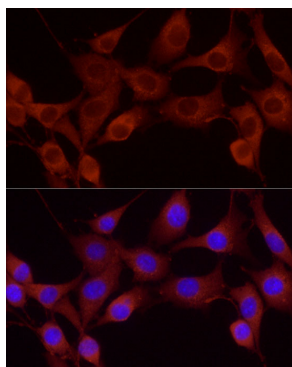


Immunofluorescence analysis of PC-12 using Cortactin Rabbit pAb (A5795) at dilution of 1:25 (40x lens).
 Blue: DAPI for nuclear staining.



Immunofluorescence analysis of HeLa using Cortactin Rabbit pAb (A5795) at dilution of 1:25 (40x lens).
 Blue: DAPI for nuclear staining.

Validation Data



Immunofluorescence analysis of NIH-3T3 using Cortactin Rabbit pAb (A5795) at dilution of 1:25 (40x lens). Blue: DAPI for nuclear staining.