

A5838

Leader in Biomolecular Solutions for Life Science



[KD Validated] RHOT1/MIRO1 Rabbit pAb

Catalog No.: A5838

3 Publications

Basic Information

Observed MW

75kDa

Calculated MW

71kDa

Category

Polyclonal Antibody

Applications

WB, ELISA

Cross-Reactivity

Human, Mouse, Rat

Background

Predicted to enable GTP binding activity and GTPase activity. Involved in cellular homeostasis; mitochondrial outer membrane permeabilization; and mitochondrion transport along microtubule. Is integral component of mitochondrial outer membrane.

Recommended Dilutions

WB 1:2000 - 1:6000

ELISA Recommended starting concentration is 1 µg/mL. Please optimize the concentration based on your specific assay requirements.

Immunogen Information

Gene ID
55288

Swiss Prot
Q8IXI2

Immunogen

Recombinant protein (or fragment). This information is considered to be commercially sensitive.

Synonyms

ARHT1; MIRO1; MIRO-1; RHOT1/MIRO1

Contact

 www.abclonal.com

Product Information

Source
Rabbit

Isotype
IgG

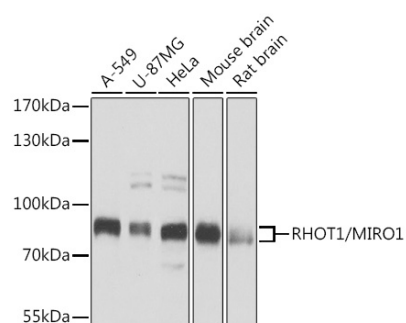
Purification
Affinity purification

Storage

Store at -20°C. Avoid freeze / thaw cycles.

Buffer: PBS with 0.09% Sodium azide, 50% glycerol, pH 7.3.

Validation Data



Western blot analysis of various lysates using [KD Validated] RHOT1/MIRO1 Rabbit pAb (A5838) at 1:1000 dilution.

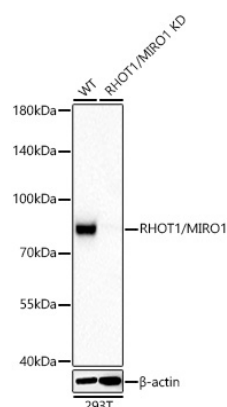
Secondary antibody: HRP-conjugated Goat anti-Rabbit IgG (H+L) (AS014) at 1:10000 dilution.

Lysates/proteins: 25µg per lane.

Blocking buffer: 3% nonfat dry milk in TBST.

Detection: ECL Basic Kit (RM00020).

Exposure time: 1s.



Western blot analysis of lysates from wild type (WT) and RHOT1/MIRO1 knockdown (KD) 293T cells using [KD Validated] RHOT1/MIRO1 Rabbit pAb (A5838) at 1:5000 dilution incubated overnight at 4°C.

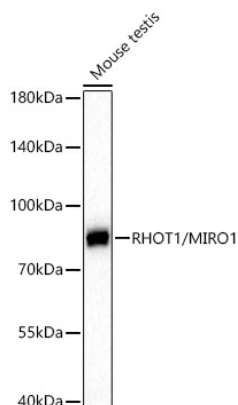
Secondary antibody: HRP-conjugated Goat anti-Rabbit IgG (H+L) (AS014) at 1:10000 dilution.

Lysates/proteins: 25 µg per lane.

Blocking buffer: 3% nonfat dry milk in TBST.

Detection: ECL Basic Kit (RM00020).

Exposure time: 60s.



Western blot analysis of lysates from Mouse testis using [KD Validated] RHOT1/MIRO1 Rabbit pAb (A5838) at 1:5000 dilution incubated overnight at 4°C.

Secondary antibody: HRP-conjugated Goat anti-Rabbit IgG (H+L) (AS014) at 1:10000 dilution.

Lysates/proteins: 25 µg per lane.

Blocking buffer: 3% nonfat dry milk in TBST.

Detection: ECL Basic Kit (RM00020).

Exposure time: 60s.