

A6121

Leader in Biomolecular Solutions for Life Science



# Cystathionase/CTH Rabbit pAb

Catalog No.: A6121

6 Publications

## Basic Information

### Observed MW

45kDa

### Calculated MW

45kDa

### Category

Polyclonal Antibody

### Applications

WB,IF/ICC,IP,ELISA

### Cross-Reactivity

Human,Mouse,Rat

## Background

This gene encodes a cytoplasmic enzyme in the trans-sulfuration pathway that converts cystathione derived from methionine into cysteine. Glutathione synthesis in the liver is dependent upon the availability of cysteine. Mutations in this gene cause cystathioninuria. Alternative splicing of this gene results in three transcript variants encoding different isoforms.

## Recommended Dilutions

**WB** 1:500 - 1:1000

**IF/ICC** 1:50 - 1:200

**IP** 0.5µg-4µg antibody for  
200µg-400µg extracts  
of whole cells

**ELISA** Recommended starting  
concentration is 1  
µg/mL. Please optimize  
the concentration  
based on your specific  
assay requirements.

## Contact



[www.abclonal.com](http://www.abclonal.com)

## Immunogen Information

### Gene ID

1491

### Swiss Prot

P32929

### Immunogen

Recombinant protein (or fragment). This information is considered to be commercially sensitive.

### Synonyms

CGL; CSE; Cystathionase/CTH

## Product Information

### Source

Rabbit

### Isotype

IgG

### Purification

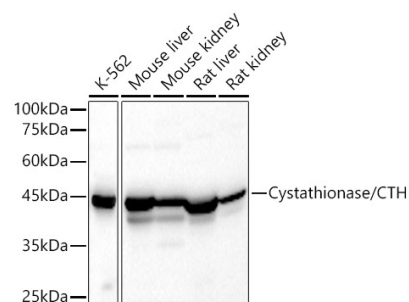
Affinity purification

### Storage

Store at -20°C. Avoid freeze / thaw cycles.

Buffer: PBS containing 50% glycerol, preserved with proclin300 or sodium azide (as specified on the Certificate of Analysis), pH 7.3.

## Validation Data



Western blot analysis of various lysates, using Cystathionase/CTH Rabbit pAb (A6121) at 1:500 dilution.

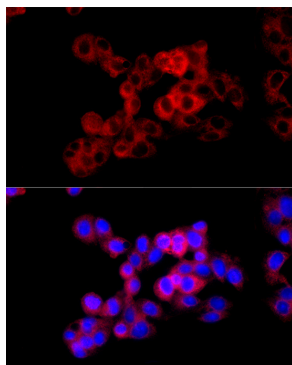
Secondary antibody: HRP-conjugated Goat anti-Rabbit IgG (H+L) (AS014) at 1:10000 dilution.

Lysates/proteins: 25µg per lane.

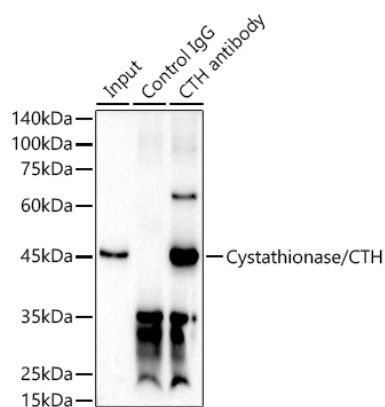
Blocking buffer: 3% nonfat dry milk in TBST.

Detection: ECL Basic Kit (RM00020).

Exposure time: 30s.



Immunofluorescence analysis of HepG2 cells using Cystathionase/CTH Rabbit pAb (A6121) at dilution of 1:50 (40x lens). Secondary antibody: Cy3-conjugated Goat anti-Rabbit IgG (H+L) (AS007) at 1:500 dilution. Blue: DAPI for nuclear staining.



Immunoprecipitation analysis of 300 µg extracts of K-562 cells using 3 µg Cystathionase/CTH antibody (A6121). Western blot was performed from the immunoprecipitate using Cystathionase/CTH antibody (A6121) at a dilution of 1:500.