

A6334

Leader in Biomolecular Solutions for Life Science



CCAR1 Rabbit pAb

Catalog No.: A6334

Basic Information

Observed MW

132kDa

Calculated MW

133kDa

Category

Polyclonal Antibody

Applications

WB,IP,ELISA

Cross-Reactivity

Human,Mouse,Rat

Background

Enables RNA polymerase II cis-regulatory region sequence-specific DNA binding activity; nuclear receptor coactivator activity; and transcription corepressor activity. Involved in positive regulation of cell migration and positive regulation of cell population proliferation. Acts upstream of or within positive regulation of apoptotic process. Located in nuclear envelope lumen.

Recommended Dilutions

WB 1:500 - 1:1000

IP 0.5µg-4µg antibody for
200µg-400µg extracts
of whole cells

ELISA Recommended starting
concentration is 1
µg/mL. Please optimize
the concentration
based on your specific
assay requirements.

Immunogen Information

Gene ID

55749

Swiss Prot

Q8IX12

Immunogen

Recombinant protein (or fragment). This information is considered to be commercially sensitive.

Synonyms

CCAR1

Product Information

Source

Rabbit

Isotype

IgG

Purification

Affinity purification

Storage

Store at -20°C. Avoid freeze / thaw cycles.

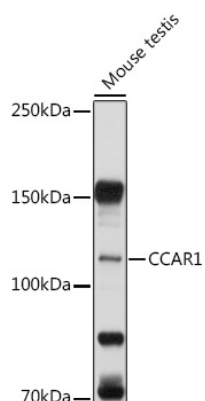
Buffer: PBS with 0.02% sodium azide, 50% glycerol, pH7.3.

Contact



www.abclonal.com

Validation Data



Western blot analysis of lysates from Mouse testis, using CCAR1 Rabbit pAb (A6334) at 1:1000 dilution.

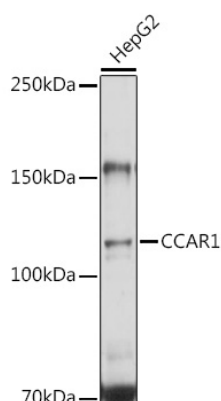
Secondary antibody: HRP-conjugated Goat anti-Rabbit IgG (H+L) (AS014) at 1:10000 dilution.

Lysates/proteins: 25µg per lane.

Blocking buffer: 3% nonfat dry milk in TBST.

Detection: ECL Enhanced Kit (RM00021).

Exposure time: 5s.



Western blot analysis of lysates from HepG2 cells, using CCAR1 Rabbit pAb (A6334) at 1:1000 dilution.

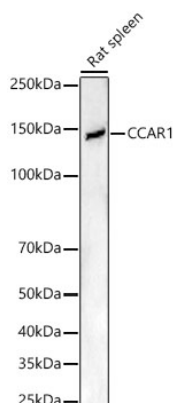
Secondary antibody: HRP-conjugated Goat anti-Rabbit IgG (H+L) (AS014) at 1:10000 dilution.

Lysates/proteins: 25µg per lane.

Blocking buffer: 3% nonfat dry milk in TBST.

Detection: ECL Basic Kit (RM00020).

Exposure time: 10s.



Western blot analysis of lysates from Rat spleen, using CCAR1 Rabbit pAb (A6334) at 1:700 dilution.

Secondary antibody: HRP-conjugated Goat anti-Rabbit IgG (H+L) (AS014) at 1:10000 dilution.

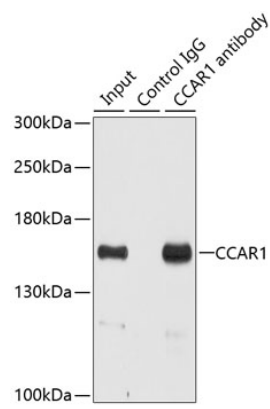
Lysates/proteins: 25µg per lane.

Blocking buffer: 3% nonfat dry milk in TBST.

Detection: ECL Enhanced Kit (RM00021).

Exposure time: 30s.

Validation Data



Immunoprecipitation analysis of 200 µg extracts of HeLa cells using 3 µg CCAR1 antibody (A6334). Western blot was performed from the immunoprecipitate using CCAR1 antibody (A6334) at a dilution of 1:500.