

A6336

Leader in Biomolecular Solutions for Life Science



CIAPIN1 Rabbit pAb

Catalog No.: A6336

Basic Information

Observed MW

39kDa

Calculated MW

34kDa

Category

Polyclonal Antibody

Applications

WB,IF/ICC,IP,ELISA

Cross-Reactivity

Human,Mouse

Background

CIAPIN1 is a cytokine-induced inhibitor of apoptosis with no relation to apoptosis regulatory molecules of the BCL2 (MIM 151430) or CASP (see MIM 147678) families. Expression of CIAPIN1 is dependent on growth factor stimulation (Shibayama et al., 2004 [PubMed 14970183]).

Recommended Dilutions

WB 1:500 - 1:2000

IF/ICC 1:50 - 1:200

IP 0.5µg-4µg antibody for
200µg-400µg extracts
of whole cells

ELISA Recommended starting
concentration is 1
µg/mL. Please optimize
the concentration
based on your specific
assay requirements.

Contact

 www.abclonal.com

Immunogen Information

Gene ID

57019

Swiss Prot

Q6FI81

Immunogen

Recombinant protein (or fragment). This information is considered to be commercially sensitive.

Synonyms

DRE2; CIAE2; PRO0915; Anamorsin; CIAPIN1

Product Information

Source

Rabbit

Isotype

IgG

Purification

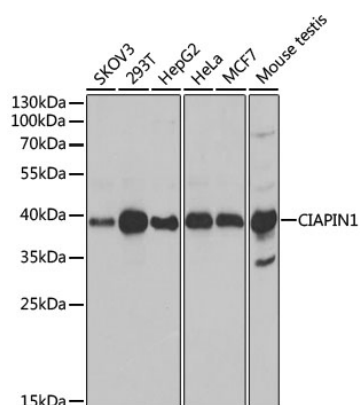
Affinity purification

Storage

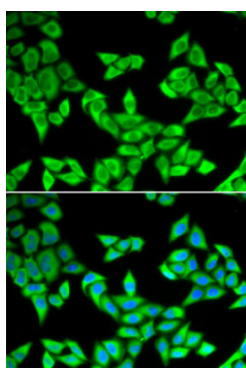
Store at -20°C. Avoid freeze / thaw cycles.

Buffer: PBS with 0.02% sodium azide, 50% glycerol, pH7.3.

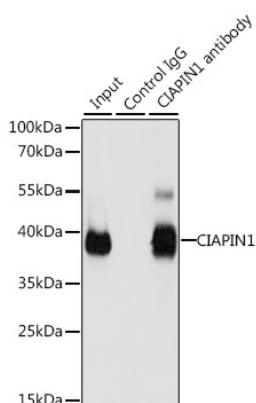
Validation Data



Western blot analysis of various lysates using CIAPIN1 Rabbit pAb (A6336) at 1:1000 dilution.
 Secondary antibody: HRP-conjugated Goat anti-Rabbit IgG (H+L) (AS014) at 1:10000 dilution.
 Lysates/proteins: 25µg per lane.
 Blocking buffer: 3% nonfat dry milk in TBST.
 Detection: ECL Basic Kit (RM00020).
 Exposure time: 10s.



Immunofluorescence analysis of U2OS cells using CIAPIN1 Rabbit pAb (A6336). Secondary antibody: Cy3-conjugated Goat anti-Rabbit IgG (H+L) (AS007) at 1:500 dilution. Blue: DAPI for nuclear staining.



Immunoprecipitation analysis of 200 µg extracts of 293T cells, using 3 µg CIAPIN1 antibody (A6336). Western blot was performed from the immunoprecipitate using CIAPIN1 antibody (A6336) at a dilution of 1:1000.