

A6360

Leader in Biomolecular Solutions for Life Science



C1R Rabbit pAb

Catalog No.: A6360

1 Publications

Basic Information

Observed MW

Refer to figures

Calculated MW

80kDa

Category

Polyclonal Antibody

Applications

IF/ICC,ELISA

Cross-Reactivity

Human,Mouse

Background

This gene encodes a member of the peptidase S1 protein family. The encoded protein is a proteolytic subunit in the complement system C1 complex. The complement system acts as a mediator in the innate immune response by ultimately triggering phagocytosis, inflammation, and rupturing the bacterial cell wall. Mutations in this gene are associated with Ehlers-Danlos Syndrome.

Recommended Dilutions

IF/ICC 1:50 - 1:200

ELISA Recommended starting concentration is 1 µg/mL. Please optimize the concentration based on your specific assay requirements.

Immunogen Information

Gene ID

715

Swiss Prot

P00736

Immunogen

Recombinant protein (or fragment). This information is considered to be commercially sensitive.

Synonyms

EDS8; EDSPD1; C1R

Contact



www.abclonal.com

Product Information

Source

Rabbit

Isotype

IgG

Purification

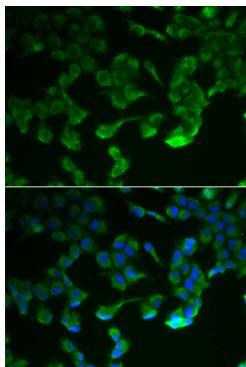
Affinity purification

Storage

Store at -20°C. Avoid freeze / thaw cycles.

Buffer: PBS containing 50% glycerol, preserved with proclin300 or sodium azide (as specified on the Certificate of Analysis), pH 7.3.

Validation Data



Immunofluorescence analysis of HeLa cells using C1R Rabbit pAb (A6360). Secondary antibody: Cy3-conjugated Goat anti-Rabbit IgG (H+L) (AS007) at 1:500 dilution. Blue: DAPI for nuclear staining.