

A6399

Leader in Biomolecular Solutions for Life Science



PSG1 Rabbit pAb

Catalog No.: A6399

Basic Information

Observed MW

55-72kDa

Calculated MW

47kDa

Category

Polyclonal Antibody

Applications

WB,IHC-P,IF/ICC,ELISA

Cross-Reactivity

Human

Background

The human placenta is a multihormonal endocrine organ that produces hormones, enzymes, and other molecules that support fetal survival and development. Pregnancy-specific beta-1-glycoprotein (PSBG, PSG) is a major product of the syncytiotrophoblast, reaching concentrations of 100 to 290 mg/l at term in the serum of pregnant women (Horne et al., 1976 [PubMed 971765]). PSG is a member of the immunoglobulin (Ig) superfamily (Watanabe and Chou, 1988 [PubMed 3257488]; Streydio et al., 1988 [PubMed 3260773]).

Recommended Dilutions

WB 1:500 - 1:2000

IHC-P 1:50 - 1:100

IF/ICC 1:50 - 1:200

ELISA Recommended starting concentration is 1 µg/mL. Please optimize the concentration based on your specific assay requirements.

Immunogen Information

Gene ID

5669

Swiss Prot

P11464

Immunogen

Recombinant protein (or fragment). This information is considered to be commercially sensitive.

Synonyms

SP1; B1G1; PBG1; CD66f; PSBG1; PSG95; PSGGA; DHFRP2; PSBG-1; PSGIIA; FL-NCA-1/2; PS-beta-C/D; PS-beta-G-1; PSG1

Product Information

Source

Rabbit

Isotype

IgG

Purification

Affinity purification

Storage

Store at -20°C. Avoid freeze / thaw cycles.

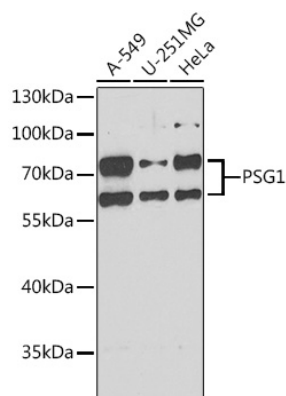
Buffer: PBS with 0.02% sodium azide, 50% glycerol, pH7.3.

Contact

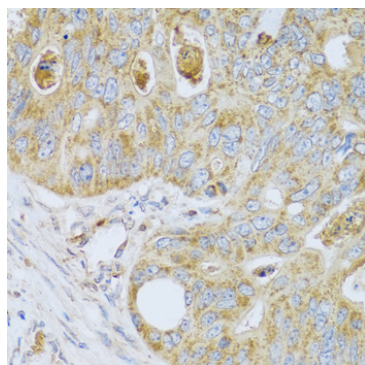


www.abclonal.com

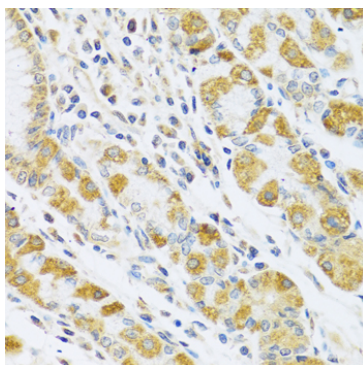
Validation Data



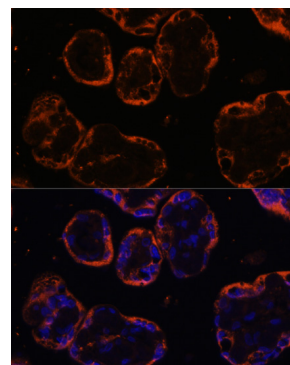
Western blot analysis of various lysates using PSG1 Rabbit pAb (A6399) at 1:1000 dilution.
Secondary antibody: HRP-conjugated Goat anti-Rabbit IgG (H+L) (AS014) at 1:10000 dilution.
Lysates/proteins: 25µg per lane.
Blocking buffer: 3% nonfat dry milk in TBST.
Detection: ECL Basic Kit (RM00020).
Exposure time: 90s.



Immunohistochemistry analysis of paraffin-embedded Human colon carcinoma using PSG1 Rabbit pAb (A6399) at dilution of 1:100 (40x lens). Microwave antigen retrieval performed with 0.01M PBS Buffer (pH 7.2) prior to IHC staining.



Immunohistochemistry analysis of paraffin-embedded Human stomach using PSG1 Rabbit pAb (A6399) at dilution of 1:100 (40x lens). Microwave antigen retrieval performed with 0.01M PBS Buffer (pH 7.2) prior to IHC staining.



Immunofluorescence analysis of paraffin-embedded human placenta using PSG1 Rabbit pAb (A6399) at dilution of 1:100. Secondary antibody: Cy3-conjugated Goat anti-Rabbit IgG (H+L) (AS007) at 1:500 dilution. Blue: DAPI for nuclear staining.