

A6429

Leader in Biomolecular Solutions for Life Science



[KO Validated] C21orf33 Rabbit pAb

Catalog No.: A6429

KO Validated

1 Publications

Basic Information

Observed MW

25kDa

Calculated MW

24kDa/28kDa

Category

Polyclonal Antibody

Applications

WB,IF/ICC,ELISA

Cross-Reactivity

Human,Mouse,Rat

Background

This gene encodes a potential mitochondrial protein that is a member of the DJ-1/PfpI gene family. This protein is overexpressed in fetal Down syndrome brain. Alternate splicing results in multiple transcript variants.

Recommended Dilutions

WB 1:500 - 1:1000

IF/ICC 1:10 - 1:100

ELISA Recommended starting concentration is 1 µg/mL. Please optimize the concentration based on your specific assay requirements.

Immunogen Information

Gene ID
8209

Swiss Prot
P30042

Immunogen

Recombinant protein (or fragment). This information is considered to be commercially sensitive.

Synonyms

ES1; HES1; KNPH; KNPI; GT335; GATD3A; C21orf33; 33

Contact



www.abclonal.com

Product Information

Source
Rabbit

Isotype
IgG

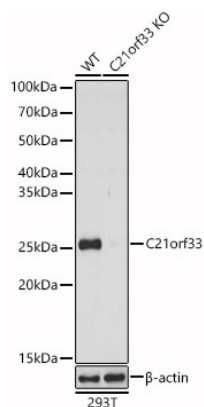
Purification
Affinity purification

Storage

Store at -20°C. Avoid freeze / thaw cycles.

Buffer: PBS with 0.02% sodium azide, 50% glycerol, pH 7.3.

Validation Data



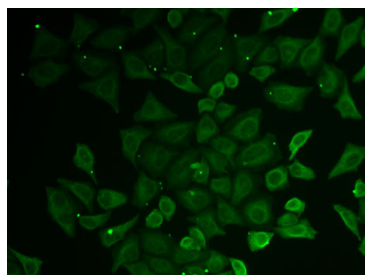
Western blot analysis of lysates from wild type(WT) and C21orf33 knockout (KO) 293T(KO) cells, using [KO Validated] C21orf33 Rabbit pAb (A6429) at 1:1000 dilution. Secondary antibody: HRP-conjugated Goat anti-Rabbit IgG (H+L) (AS014) at 1:10000 dilution.

Lysates/proteins: 25µg per lane.

Blocking buffer: 3% nonfat dry milk in TBST.

Detection: ECL Basic Kit (RM00020).

Exposure time: 1s.



Immunofluorescence analysis of U2OS cells using [KO Validated] C21orf33 Rabbit pAb (A6429).Secondary antibody: Cy3-conjugated Goat anti-Rabbit IgG (H+L) (AS007) at 1:500 dilution.