

A6451

Leader in Biomolecular Solutions for Life Science



SPAG5 Rabbit pAb

Catalog No.: A6451

Basic Information

Observed MW

Calculated MW

134kDa

Category

Polyclonal Antibody

Applications

IF/ICC,ELISA

Cross-Reactivity

Human

Background

This gene encodes a protein associated with the mitotic spindle apparatus. The encoded protein may be involved in the functional and dynamic regulation of mitotic spindles.

Recommended Dilutions

IF/ICC 1:20 - 1:50

ELISA Recommended starting concentration is 1 µg/mL. Please optimize the concentration based on your specific assay requirements.

Immunogen Information

Gene ID

10615

Swiss Prot

Q96R06

Immunogen

Recombinant protein (or fragment). This information is considered to be commercially sensitive.

Synonyms

MAP126; DEEPEST; hMAP126; SPAG5

Contact

 www.abclonal.com

Product Information

Source

Rabbit

Isotype

IgG

Purification

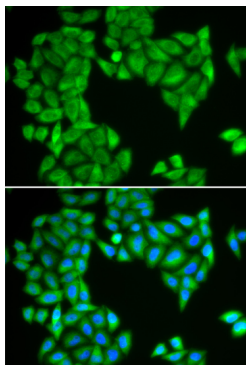
Affinity purification

Storage

Store at -20°C. Avoid freeze / thaw cycles.

Buffer: PBS with 0.02% sodium azide, 50% glycerol, pH7.3.

Validation Data



Immunofluorescence analysis of HeLa cells using SPAG5 Rabbit pAb (A6451). Secondary antibody: Cy3-conjugated Goat anti-Rabbit IgG (H+L) (AS007) at 1:500 dilution. Blue: DAPI for nuclear staining.