

A6459

Leader in Biomolecular Solutions for Life Science



GNL3 Rabbit pAb

Catalog No.: A6459

1 Publications

Basic Information

Observed MW

62kDa

Calculated MW

62kDa

Category

Polyclonal Antibody

Applications

WB,IF/ICC,IP,ELISA

Cross-Reactivity

Human

Background

The protein encoded by this gene may interact with p53 and may be involved in tumorigenesis. The encoded protein also appears to be important for stem cell proliferation. This protein is found in both the nucleus and nucleolus. Three transcript variants encoding two different isoforms have been found for this gene.

Recommended Dilutions

WB 1:500 - 1:2000

IF/ICC 1:10 - 1:100

IP 0.5µg-4µg antibody for
200µg-400µg extracts
of whole cells

ELISA Recommended starting
concentration is 1
µg/mL. Please optimize
the concentration
based on your specific
assay requirements.

Contact



www.abclonal.com

Immunogen Information

Gene ID

26354

Swiss Prot

Q9BVP2

Immunogen

Recombinant protein (or fragment). This information is considered to be commercially sensitive.

Synonyms

NS; E2IG3; NNP47; C77032; GNL3

Product Information

Source

Rabbit

Isotype

IgG

Purification

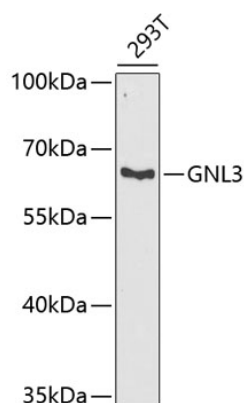
Affinity purification

Storage

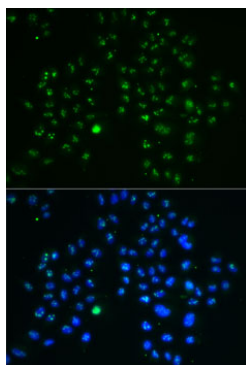
Store at -20°C. Avoid freeze / thaw cycles.

Buffer: PBS with 0.02% sodium azide, 50% glycerol, pH7.3.

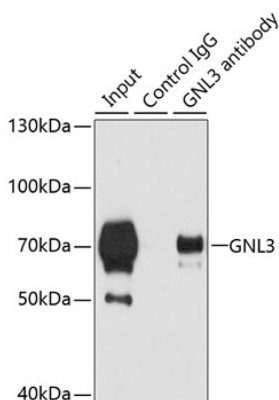
Validation Data



Western blot analysis of lysates from 293T cells, using GNL3 Rabbit pAb (A6459) at 1:1000 dilution.
Secondary antibody: HRP-conjugated Goat anti-Rabbit IgG (H+L) (AS014) at 1:10000 dilution.
Lysates/proteins: 25µg per lane.
Blocking buffer: 3% nonfat dry milk in TBST.
Detection: ECL Basic Kit (RM00020).
Exposure time: 90s.



Immunofluorescence analysis of MCF7 cells using GNL3 Rabbit pAb (A6459). Secondary antibody: Cy3-conjugated Goat anti-Rabbit IgG (H+L) (AS007) at 1:500 dilution. Blue: DAPI for nuclear staining.



Immunoprecipitation analysis of 200 µg extracts of 293T cells using 3 µg GNL3 antibody (A6459). Western blot was performed from the immunoprecipitate using GNL3 antibody (A6459) at a dilution of 1:500.