

A6472

Leader in Biomolecular Solutions for Life Science



ACSS2 Rabbit pAb

Catalog No.: A6472

1 Publications

Basic Information

Observed MW

78kDa

Calculated MW

79kDa

Category

Polyclonal Antibody

Applications

WB,IF/ICC,ELISA

Cross-Reactivity

Human,Mouse,Rat

Background

This gene encodes a cytosolic enzyme that catalyzes the activation of acetate for use in lipid synthesis and energy generation. The protein acts as a monomer and produces acetyl-CoA from acetate in a reaction that requires ATP. Expression of this gene is regulated by sterol regulatory element-binding proteins, transcription factors that activate genes required for the synthesis of cholesterol and unsaturated fatty acids. Alternative splicing results in multiple transcript variants.

Recommended Dilutions

WB 1:500 - 1:2000

IF/ICC 1:50 - 1:200

ELISA Recommended starting concentration is 1 µg/mL. Please optimize the concentration based on your specific assay requirements.

Immunogen Information

Gene ID

55902

Swiss Prot

Q9NR19

Immunogen

Recombinant protein (or fragment). This information is considered to be commercially sensitive.

Synonyms

ACS; ACSA; ACAS2; ACECS; AceCS1; dJ1161H23.1; ACSS2

Contact



www.abclonal.com

Product Information

Source

Rabbit

Isotype

IgG

Purification

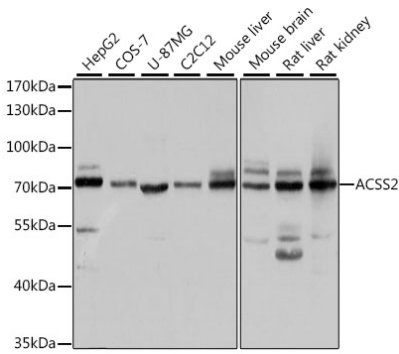
Affinity purification

Storage

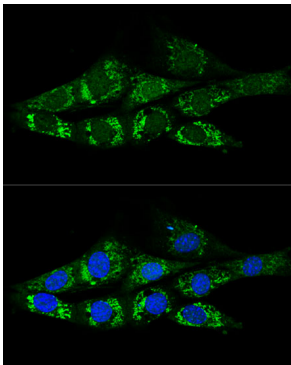
Store at -20°C. Avoid freeze / thaw cycles.

Buffer: PBS with 0.09% Sodium azide, 50% glycerol, pH 7.3.

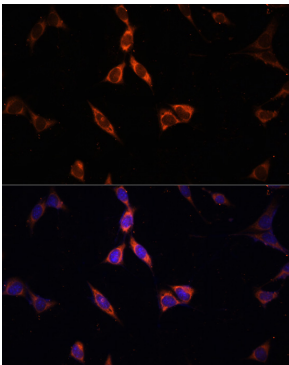
Validation Data



Western blot analysis of various lysates using ACS2 Rabbit pAb (A6472) at 1:1000 dilution.
Secondary antibody: HRP-conjugated Goat anti-Rabbit IgG (H+L) (AS014) at 1:10000 dilution.
Lysates/proteins: 25µg per lane.
Blocking buffer: 3% nonfat dry milk in TBST.
Detection: ECL Basic Kit (RM00020).
Exposure time: 5s.



Confocal immunofluorescence analysis of NIH-3T3 cells using ACS2 Rabbit pAb (A6472) at dilution of 1:200. Blue: DAPI for nuclear staining.



Immunofluorescence analysis of NIH-3T3 cells using ACS2 Rabbit pAb (A6472) at dilution of 100 (40x lens). Secondary antibody: Cy3-conjugated Goat anti-Rabbit IgG (H+L) (AS007) at 1:500 dilution. Blue: DAPI for nuclear staining.