

A6480

Leader in Biomolecular Solutions for Life Science



KIF2B Rabbit pAb

Catalog No.: A6480

1 Publications

Basic Information

Observed MW

75kDa

Calculated MW

76kDa

Category

Polyclonal Antibody

Applications

WB, ELISA

Cross-Reactivity

Human, Mouse, Rat

Background

Predicted to enable microtubule binding activity and microtubule motor activity. Involved in metaphase plate congression; microtubule depolymerization; and regulation of chromosome segregation. Located in intercellular bridge; mitotic spindle; and nucleolus.

Recommended Dilutions

WB 1:500 - 1:1000

ELISA Recommended starting concentration is 1 µg/mL. Please optimize the concentration based on your specific assay requirements.

Immunogen Information

Gene ID

84643

Swiss Prot

Q8N4N8

Immunogen

Recombinant protein (or fragment). This information is considered to be commercially sensitive.

Synonyms

KIF2B

Contact



www.abclonal.com

Product Information

Source

Rabbit

Isotype

IgG

Purification

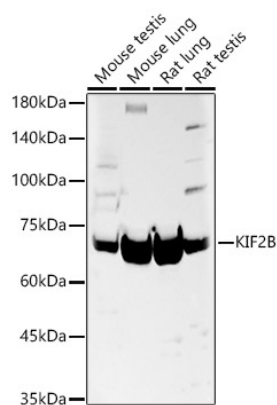
Affinity purification

Storage

Store at -20°C. Avoid freeze / thaw cycles.

Buffer: PBS containing 50% glycerol, preserved with proclin300 or sodium azide (as specified on the Certificate of Analysis), pH 7.3.

Validation Data



Western blot analysis of various lysates, using KIF2B Rabbit pAb (A6480) at 1:1000 dilution.
Secondary antibody: HRP-conjugated Goat anti-Rabbit IgG (H+L) (AS014) at 1:10000 dilution.
Lysates/proteins: 25µg per lane.
Blocking buffer: 3% nonfat dry milk in TBST.
Detection: ECL Basic Kit (RM00020).
Exposure time: 30s.