

A6546

Leader in Biomolecular Solutions for Life Science



## TCP1 beta/CCT2 Rabbit pAb

Catalog No.: A6546

4 Publications

### Basic Information

#### Observed MW

57kDa

#### Calculated MW

57kDa

#### Category

Polyclonal Antibody

#### Applications

WB,IF/ICC,IP,ELISA

#### Cross-Reactivity

Human,Mouse

### Background

The protein encoded by this gene is a molecular chaperone that is a member of the chaperonin containing TCP1 complex (CCT), also known as the TCP1 ring complex (TRiC). This complex consists of two identical stacked rings, each containing eight different proteins. Unfolded polypeptides enter the central cavity of the complex and are folded in an ATP-dependent manner. The complex folds various proteins, including actin and tubulin. Two transcript variants encoding different isoforms have been found for this gene.

### Recommended Dilutions

**WB** 1:500 - 1:2000

**IF/ICC** 1:50 - 1:200

**IP** 0.5µg-4µg antibody for  
200µg-400µg extracts  
of whole cells

**ELISA** Recommended starting  
concentration is 1  
µg/mL. Please optimize  
the concentration  
based on your specific  
assay requirements.

### Contact



[www.abclonal.com](http://www.abclonal.com)

### Immunogen Information

#### Gene ID

10576

#### Swiss Prot

P78371

#### Immunogen

Recombinant protein (or fragment). This information is considered to be commercially sensitive.

#### Synonyms

CCTB; 99D8.1; PRO1633; CCT-beta; HEL-S-100n; TCP-1-beta; TCP1 beta/CCT2

### Product Information

#### Source

Rabbit

#### Isotype

IgG

#### Purification

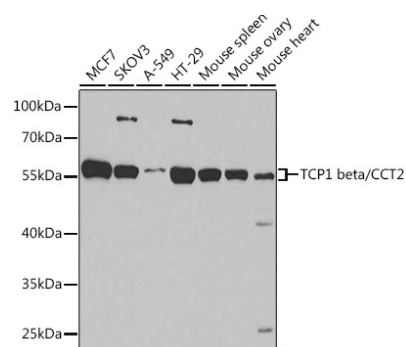
Affinity purification

#### Storage

Store at -20°C. Avoid freeze / thaw cycles.

Buffer: PBS with 0.09% Sodium azide, 50% glycerol, pH 7.3.

## Validation Data



Western blot analysis of various lysates using TCP1 beta/CCT2 Rabbit pAb (A6546) at 1:1000 dilution.

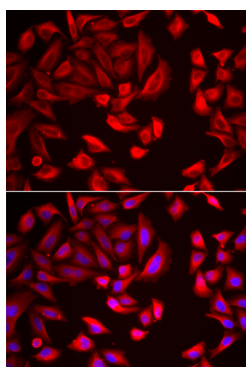
Secondary antibody: HRP-conjugated Goat anti-Rabbit IgG (H+L) (AS014) at 1:10000 dilution.

Lysates/proteins: 25µg per lane.

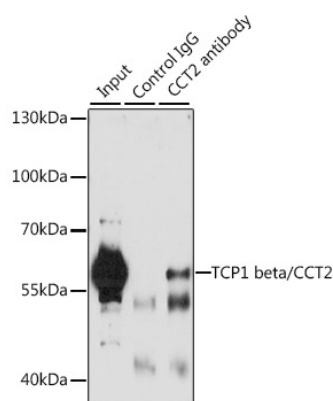
Blocking buffer: 3% nonfat dry milk in TBST.

Detection: ECL Basic Kit (RM00020).

Exposure time: 15s.



Immunofluorescence analysis of HeLa cells using TCP1 beta/CCT2 Rabbit pAb (A6546). Secondary antibody: Cy3-conjugated Goat anti-Rabbit IgG (H+L) (AS007) at 1:500 dilution. Blue: DAPI for nuclear staining.



Immunoprecipitation analysis of 200 µg extracts of A-549 cells, using 3 µg TCP1 beta/TCP1 beta/CCT2 antibody (A6546). Western blot was performed from the immunoprecipitate using TCP1 beta/TCP1 beta/CCT2 antibody (A6546) at a dilution of 1:1000.