

A6586

Leader in Biomolecular Solutions for Life Science



## FAH Rabbit pAb

Catalog No.: A6586

### Basic Information

**Observed MW**

40-45kDa/

**Calculated MW**

46kDa

**Category**

Polyclonal Antibody

**Applications**

WB,IF/ICC,ELISA

**Cross-Reactivity**

Human,Mouse,Rat

### Background

Predicted to enable fumarylacetoacetase activity. Predicted to be involved in L-phenylalanine catabolic process; homogentisate catabolic process; and tyrosine catabolic process. Predicted to act upstream of or within arginine catabolic process. Located in extracellular exosome. Implicated in tyrosinemia type I.

### Recommended Dilutions

**WB** 1:2000 - 1:10000

**IF/ICC** 1:100 - 1:500

**ELISA** Recommended starting concentration is 1 µg/mL. Please optimize the concentration based on your specific assay requirements.

### Immunogen Information

**Gene ID**

2184

**Swiss Prot**

P16930

**Immunogen**

Recombinant protein (or fragment). This information is considered to be commercially sensitive.

**Synonyms**

FAH

### Contact



[www.abclonal.com](http://www.abclonal.com)

### Product Information

**Source**

Rabbit

**Isotype**

IgG

**Purification**

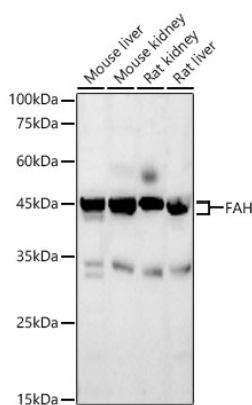
Affinity purification

**Storage**

Store at -20°C. Avoid freeze / thaw cycles.

Buffer: PBS containing 50% glycerol, preserved with proclin300 or sodium azide (as specified on the Certificate of Analysis), pH 7.3.

## Validation Data



Western blot analysis of various lysates using FAH Rabbit pAb (A6586) at 1:10000 dilution.

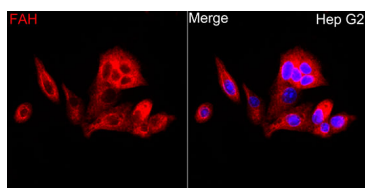
Secondary antibody: HRP-conjugated Goat anti-Rabbit IgG (H+L) (AS014) at 1:10000 dilution.

Lysates / proteins: 25 µg per lane.

Blocking buffer: 3 % nonfat dry milk in TBST.

Detection: ECL Basic Kit (RM00020).

Exposure time: 180s.



Immunofluorescence analysis of HepG2 cells using FAH Rabbit pAb (A6586) at dilution of 1:500 (40x lens). Secondary antibody: Cy3-conjugated Goat anti-Rabbit IgG (H+L) (AS007) at 1:500 dilution. Blue: DAPI for nuclear staining.