

A6616

Leader in Biomolecular Solutions for Life Science



HAPLN1 Rabbit pAb

Catalog No.: A6616

1 Publications

Basic Information

Observed MW

50kDa

Calculated MW

40kDa

Category

Polyclonal Antibody

Applications

WB,IHC-P,ELISA

Cross-Reactivity

Human,Mouse,Rat

Background

Predicted to enable hyaluronic acid binding activity. Predicted to be an extracellular matrix structural constituent conferring compression resistance. Predicted to be involved in central nervous system development and skeletal system development. Colocalizes with collagen-containing extracellular matrix.

Recommended Dilutions

WB 1:500 - 1:2000

IHC-P 1:100 - 1:500

ELISA Recommended starting concentration is 1 µg/mL. Please optimize the concentration based on your specific assay requirements.

Immunogen Information

Gene ID

1404

Swiss Prot

P10915

Immunogen

Recombinant protein (or fragment). This information is considered to be commercially sensitive.

Synonyms

CRT1; CRTL1; HAPLN1

Contact



www.abclonal.com

Product Information

Source

Rabbit

Isotype

IgG

Purification

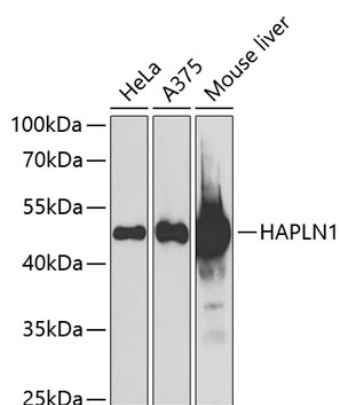
Affinity purification

Storage

Store at -20°C. Avoid freeze / thaw cycles.

Buffer: PBS with 0.09% Sodium azide, 50% glycerol, pH 7.3.

Validation Data



Western blot analysis of various lysates using HAPLN1 Rabbit pAb (A6616) at 1:1000 dilution.

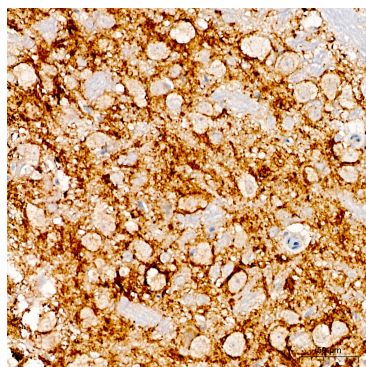
Secondary antibody: HRP-conjugated Goat anti-Rabbit IgG (H+L) (AS014) at 1:10000 dilution.

Lysates/proteins: 25µg per lane.

Blocking buffer: 3% nonfat dry milk in TBST.

Detection: ECL Basic Kit (RM00020).

Exposure time: 90s.



Immunohistochemistry analysis of paraffin-embedded Rat brain tissue using HAPLN1 Rabbit pAb (A6616) at a dilution of 1:300 (40x lens). High pressure antigen retrieval performed with 0.01M Citrate Buffer(pH 6.0) prior to IHC staining.