

A6685

Leader in Biomolecular Solutions for Life Science



## [KO Validated] PDCD6 Rabbit pAb

Catalog No.: A6685

**KO** Validated

1 Publications

### Basic Information

#### Observed MW

16kDa

#### Calculated MW

22kDa

#### Category

Polyclonal Antibody

#### Applications

WB,IP,ELISA

#### Cross-Reactivity

Human,Mouse,Rat

### Background

This gene encodes a calcium-binding protein belonging to the penta-EF-hand protein family. Calcium binding is important for homodimerization and for conformational changes required for binding to other protein partners. This gene product participates in T cell receptor-, Fas-, and glucocorticoid-induced programmed cell death. In mice deficient for this gene product, however, apoptosis was not blocked suggesting this gene product is functionally redundant. Alternatively spliced transcript variants encoding multiple isoforms have been observed for this gene, and a pseudogene of this gene is also located on the short arm of chromosome 5.

### Recommended Dilutions

**WB** 1:500 - 1:1000

**IP** 0.5µg-4µg antibody for  
200µg-400µg extracts  
of whole cells

**ELISA** Recommended starting  
concentration is 1  
µg/mL. Please optimize  
the concentration  
based on your specific  
assay requirements.

### Immunogen Information

#### Gene ID

10016

#### Swiss Prot

O75340

#### Immunogen

Recombinant protein (or fragment). This information is considered to be commercially sensitive.

#### Synonyms

ALG2; ALG-2; PEF1B; D6

### Product Information

#### Source

Rabbit

#### Isotype

IgG

#### Purification

Affinity purification

#### Storage

Store at -20°C. Avoid freeze / thaw cycles.

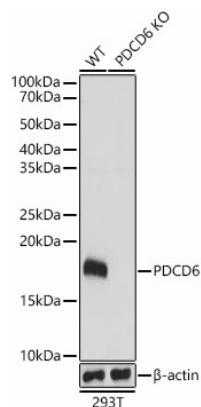
Buffer: PBS with 0.02% sodium azide, 50% glycerol, pH7.3.

### Contact

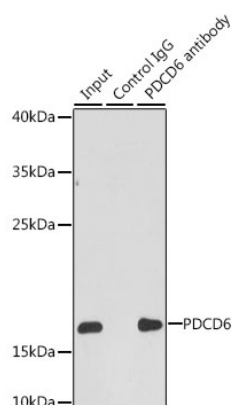


[www.abclonal.com](http://www.abclonal.com)

## Validation Data



Western blot analysis of lysates from wild type (WT) and PDCD6 knockout (KO) 293T(KO) cells, using [KO Validated] PDCD6 Rabbit pAb (A6685) at 1:1000 dilution. Secondary antibody: HRP-conjugated Goat anti-Rabbit IgG (H+L) (AS014) at 1:10000 dilution.  
Lysates/proteins: 25 $\mu$ g per lane.  
Blocking buffer: 3% nonfat dry milk in TBST.  
Detection: ECL Basic Kit (RM00020).  
Exposure time: 1s.



Immunoprecipitation analysis of 200  $\mu$ g extracts of HepG2 cells, using 3  $\mu$ g PDCD6 antibody (A6685). Western blot was performed from the immunoprecipitate using PDCD6 antibody (A6685) at a dilution of 1:1000.