

A6702

Leader in Biomolecular Solutions for Life Science



PP2A Catalytic α Rabbit pAb

Catalog No.: A6702

7 Publications

Basic Information

Observed MW

36kDa

Calculated MW

36kDa

Category

Polyclonal Antibody

Applications

WB,IHC-P,IF/ICC,IP,ELISA

Cross-Reactivity

Human,Mouse,Rat

Background

This gene encodes the phosphatase 2A catalytic subunit. Protein phosphatase 2A is one of the four major Ser/Thr phosphatases, and it is implicated in the negative control of cell growth and division. It consists of a common heteromeric core enzyme, which is composed of a catalytic subunit and a constant regulatory subunit, that associates with a variety of regulatory subunits. This gene encodes an alpha isoform of the catalytic subunit.

Recommended Dilutions

WB 1:1000 - 1:5000

IHC-P 1:50 - 1:200

IF/ICC 1:50 - 1:200

IP 0.5 μ g-4 μ g antibody for
200 μ g-500 μ g extracts
of whole cells

ELISA Recommended starting
concentration is 1
 μ g/mL. Please optimize
the concentration
based on your specific
assay requirements.

Immunogen Information

Gene ID

5515

Swiss Prot

P67775

Immunogen

Recombinant protein (or fragment). This information is considered to be commercially sensitive.

Synonyms

RP-C; PP2Ac; PP2CA; NEDLBA; PP2Calpha; PP2A Catalytic α

Product Information

Source

Rabbit

Isotype

IgG

Purification

Affinity purification

Storage

Store at -20°C. Avoid freeze / thaw cycles.

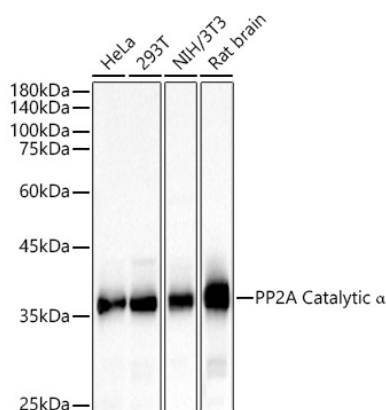
Buffer: PBS containing 50% glycerol, preserved with proclin300 or sodium azide (as specified on the Certificate of Analysis), pH 7.3.

Contact



www.abclonal.com

Validation Data



Western blot analysis of various lysates, using PP2A Catalytic α Rabbit pAb (A6702) at 1:2000 dilution.

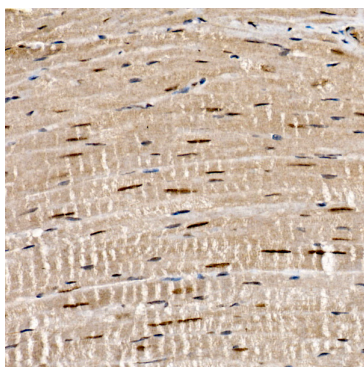
Secondary antibody: HRP-conjugated Goat anti-Rabbit IgG (H+L) (AS014) at 1:10000 dilution.

Lysates/proteins: 25 μ g per lane.

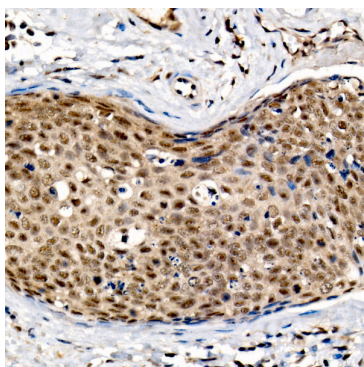
Blocking buffer: 3% nonfat dry milk in TBST.

Detection: ECL Basic Kit (RM00020).

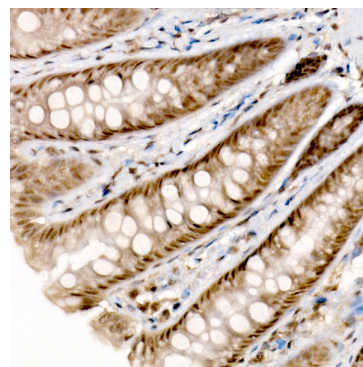
Exposure time: 10s.



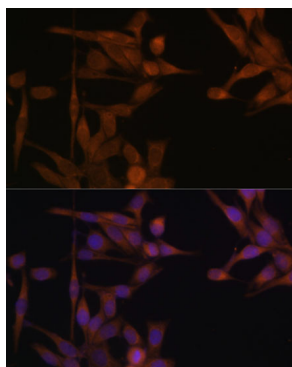
Immunohistochemistry analysis of paraffin-embedded Mouse heart tissue using PP2A Catalytic α Rabbit pAb (A6702) at a dilution of 1:100 (40x lens). High pressure antigen retrieval was performed with 0.01 M citrate buffer (pH 6.0) prior to IHC staining.



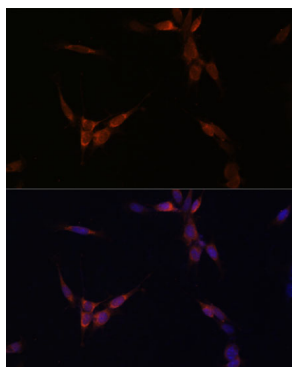
Immunohistochemistry analysis of paraffin-embedded Human cervical cancer tissue using PP2A Catalytic α Rabbit pAb (A6702) at a dilution of 1:100 (40x lens). High pressure antigen retrieval was performed with 0.01 M citrate buffer (pH 6.0) prior to IHC staining.



Immunohistochemistry analysis of paraffin-embedded Rat colon tissue using PP2A Catalytic α Rabbit pAb (A6702) at a dilution of 1:100 (40x lens). High pressure antigen retrieval was performed with 0.01 M citrate buffer (pH 6.0) prior to IHC staining.

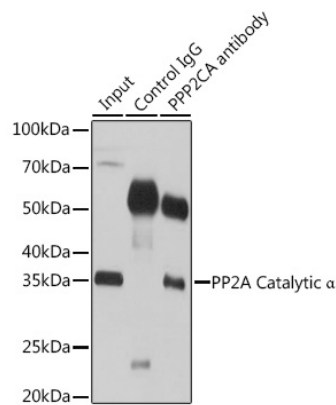


Immunofluorescence analysis of HeLa cells using PP2A Catalytic α Rabbit pAb (A6702) at dilution of 1:100. Secondary antibody: Cy3-conjugated Goat anti-Rabbit IgG (H+L) (AS007) at 1:500 dilution. Blue: DAPI for nuclear staining.

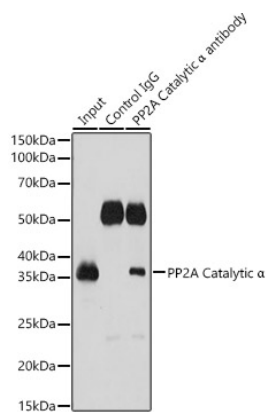


Immunofluorescence analysis of NIH/3T3 cells using PP2A Catalytic α Rabbit pAb (A6702) at dilution of 1:100. Secondary antibody: Cy3-conjugated Goat anti-Rabbit IgG (H+L) (AS007) at 1:500 dilution. Blue: DAPI for nuclear staining.

Validation Data



Immunoprecipitation analysis of 200 μ g extracts of 293T cells using 3 μ g PP2A Catalytic α antibody (A6702). Western blot was performed from the immunoprecipitate using PP2A Catalytic α antibody (A6702) at a dilution of 1:1000.



Immunoprecipitation analysis of 500 μ g extracts of Rat brain cells using 3 μ g PP2A Catalytic α antibody (A6702). Western blot was performed from the immunoprecipitate using PP2A Catalytic α antibody (A6702) at a dilution of 1:1000.