

A6742

Leader in Biomolecular Solutions for Life Science



SLC34A1 Rabbit pAb

Catalog No.: A6742

4 Publications

Basic Information

Observed MW

75-80kDa

Calculated MW

69kDa

Category

Polyclonal Antibody

Applications

WB, ELISA

Cross-Reactivity

Human, Mouse, Rat

Background

Enables sodium:phosphate symporter activity. Involved in several processes, including phosphate ion homeostasis; phosphate ion transport; and response to lead ion. Located in several cellular components, including apical plasma membrane; mitotic spindle; and nuclear speck. Implicated in several diseases, including Fanconi syndrome (multiple); chronic kidney disease; hereditary hypophosphatemic rickets with hypercalciuria; hypophosphatemic nephrolithiasis/osteoporosis 1; and nephrolithiasis.

Recommended Dilutions

WB 1:500 - 1:1000

ELISA Recommended starting concentration is 1 µg/mL. Please optimize the concentration based on your specific assay requirements.

Immunogen Information

Gene ID

6569

Swiss Prot

Q06495

Immunogen

Recombinant protein (or fragment). This information is considered to be commercially sensitive.

Synonyms

NPT2; FRTS2; SLC11; HCINF2; NAPI-3; NPTIIa; NPHLOP1; SLC17A2; SLC34A1

Contact



www.abclonal.com

Product Information

Source

Rabbit

Isotype

IgG

Purification

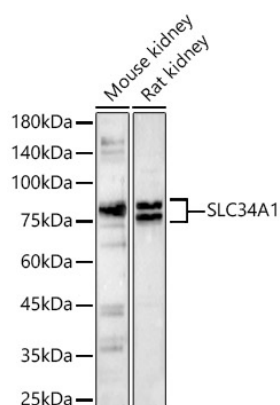
Affinity purification

Storage

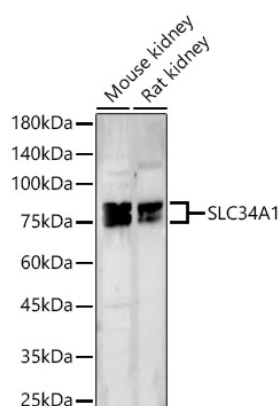
Store at -20°C. Avoid freeze / thaw cycles.

Buffer: PBS with 0.05% proclin300, 50% glycerol, pH7.3.

Validation Data



Western blot analysis of various lysates, using SLC34A1 Rabbit pAb (A6742) at 1:800 dilution.
Secondary antibody: HRP-conjugated Goat anti-Rabbit IgG (H+L) (AS014) at 1:10000 dilution.
Lysates/proteins: 25µg per lane.
Blocking buffer: 3% nonfat dry milk in TBST.
Detection: ECL Basic Kit (RM00020).
Exposure time: 90s.



Western blot analysis of various lysates, using SLC34A1 Rabbit pAb (A6742) at 1:800 dilution.
Secondary antibody: HRP-conjugated Goat anti-Rabbit IgG (H+L) (AS014) at 1:10000 dilution.
Lysates/proteins: 25µg per lane.
Blocking buffer: 3% nonfat dry milk in TBST.
Detection: ECL Basic Kit (RM00020).
Exposure time: 180s.