

A6796

Leader in Biomolecular Solutions for Life Science



## CPT1B Rabbit pAb

Catalog No.: A6796

15 Publications

### Basic Information

#### Observed MW

88kDa

#### Calculated MW

88kDa

#### Category

Polyclonal Antibody

#### Applications

WB,IHC-P,IF/ICC,ELISA

#### Cross-Reactivity

Human,Mouse,Rat

### Background

The protein encoded by this gene, a member of the carnitine/choline acetyltransferase family, is the rate-controlling enzyme of the long-chain fatty acid beta-oxidation pathway in muscle mitochondria. This enzyme is required for the net transport of long-chain fatty acyl-CoAs from the cytoplasm into the mitochondria. Multiple transcript variants encoding different isoforms have been found for this gene, and read-through transcripts are expressed from the upstream locus that include exons from this gene.

### Recommended Dilutions

**WB** 1:100 - 1:500

**IHC-P** 1:50 - 1:200

**IF/ICC** 1:50 - 1:200

**ELISA** Recommended starting concentration is 1 µg/mL. Please optimize the concentration based on your specific assay requirements.

### Immunogen Information

#### Gene ID

1375

#### Swiss Prot

Q92523

#### Immunogen

Recombinant protein (or fragment). This information is considered to be commercially sensitive.

#### Synonyms

CPTI; CPT1M; MCPT1; CPT1-M; CPTI-M; M-CPT1; MCCPT1; CPT1B

### Product Information

#### Source

Rabbit

#### Isotype

IgG

#### Purification

Affinity purification

#### Storage

Store at -20°C. Avoid freeze / thaw cycles.

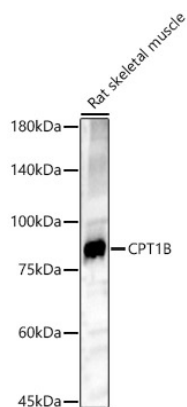
Buffer: PBS with 0.09% Sodium azide, 50% glycerol, pH7.3.

### Contact

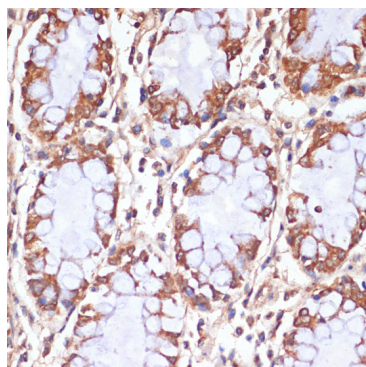


[www.abclonal.com](http://www.abclonal.com)

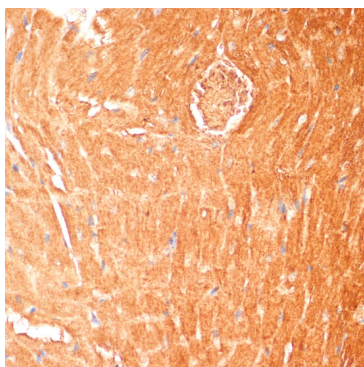
## Validation Data



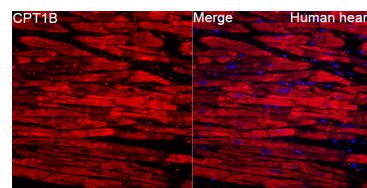
Western blot analysis of lysates from Rat skeletal muscle, using CPT1B Rabbit pAb (A6796) at 1:500 dilution.  
 Secondary antibody: HRP-conjugated Goat anti-Rabbit IgG (H+L) (AS014) at 1:10000 dilution.  
 Lysates/proteins: 25µg per lane.  
 Blocking buffer: 3% nonfat dry milk in TBST.  
 Detection: ECL Basic Kit (RM00020).  
 Exposure time: 180s.



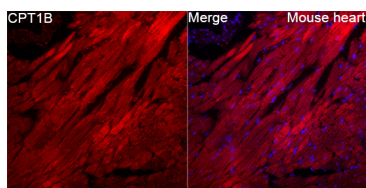
Immunohistochemistry analysis of paraffin-embedded Human colon using CPT1B Rabbit pAb (A6796) at dilution of 1:100 (40x lens).  
 Microwave antigen retrieval performed with 0.01M PBS Buffer (pH 7.2) prior to IHC staining.



Immunohistochemistry analysis of paraffin-embedded Mouse heart using CPT1B Rabbit pAb (A6796) at dilution of 1:100 (40x lens).  
 Microwave antigen retrieval performed with 0.01M PBS Buffer (pH 7.2) prior to IHC staining.



Immunofluorescence analysis of Human heart tissue using CPT1B Rabbit pAb (A6796) at a dilution of 1:100 (40x lens). Secondary antibody: Cy3-conjugated Goat anti-Rabbit IgG (H+L)(AS007) at 1:500 dilution. Blue: DAPI for nuclear staining. High pressure antigen retrieval performed with 0.01M Citrate Buffer(pH 6.0) prior to IF staining.



Immunofluorescence analysis of Mouse heart tissue using CPT1B Rabbit pAb (A6796) at a dilution of 1:100 (40x lens). Secondary antibody: Cy3-conjugated Goat anti-Rabbit IgG (H+L)(AS007) at 1:500 dilution. Blue: DAPI for nuclear staining. High pressure antigen retrieval performed

## Validation Data

---

with 0.01M Citrate Buffer(pH 6.0)  
prior to IF staining.