

A6811

Leader in Biomolecular Solutions for Life Science



# NEK2 Rabbit mAb

Catalog No.: A6811

Recombinant

1 Publications

## Basic Information

### Observed MW

50kDa

### Calculated MW

52kDa

### Category

SMab Recombinant Monoclonal  
Antibody

### Applications

WB,ELISA

### Cross-Reactivity

Human,Mouse,Rat

### CloneNo number

ARC1418

## Background

This gene encodes a serine/threonine-protein kinase that is involved in mitotic regulation. This protein is localized to the centrosome, and undetectable during G1 phase, but accumulates progressively throughout the S phase, reaching maximal levels in late G2 phase. Alternatively spliced transcript variants encoding different isoforms with distinct C-termini have been noted for this gene.

## Recommended Dilutions

**WB** 1:500 - 1:2000

**ELISA** Recommended starting concentration is 1 µg/mL. Please optimize the concentration based on your specific assay requirements.

## Immunogen Information

### Gene ID

4751

### Swiss Prot

P51955

### Immunogen

Synthetic peptide. This information is considered to be commercially sensitive.

### Synonyms

NLK1; RP67; NEK2A; HsPK21; PPP1R111; NEK2

## Contact

 [www.abclonal.com](http://www.abclonal.com)

## Product Information

### Source

Rabbit

### Isotype

IgG

### Purification

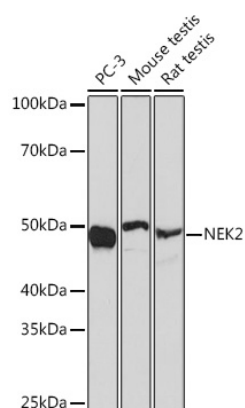
Affinity purification

### Storage

Store at -20°C. Avoid freeze / thaw cycles.

Buffer: PBS with 0.02% sodium azide,0.05% BSA,50% glycerol,pH7.3.

## Validation Data



Western blot analysis of various lysates using NEK2 Rabbit mAb (A6811) at 1:1000 dilution.

Secondary antibody: HRP-conjugated Goat anti-Rabbit IgG (H+L) (AS014) at 1:10000 dilution.

Lysates/proteins: 25µg per lane.

Blocking buffer: 3% nonfat dry milk in TBST.

Detection: ECL Basic Kit (RM00020).

Exposure time: 30s.