

A6914

Leader in Biomolecular Solutions for Life Science



GIF Rabbit pAb

Catalog No.: A6914

Basic Information

Observed MW

45kDa

Calculated MW

45kDa

Category

Polyclonal Antibody

Applications

WB,IF/ICC,ELISA

Cross-Reactivity

Human,Mouse

Background

This gene is a member of the cobalamin transport protein family. It encodes a glycoprotein secreted by parietal cells of the gastric mucosa and is required for adequate absorption of vitamin B12. Vitamin B12 is necessary for erythrocyte maturation and mutations in this gene may lead to congenital pernicious anemia.

Recommended Dilutions

WB 1:500 - 1:2000

IF/ICC 1:50 - 1:100

ELISA Recommended starting concentration is 1 µg/mL. Please optimize the concentration based on your specific assay requirements.

Immunogen Information

Gene ID

2694

Swiss Prot

P27352

Immunogen

Recombinant protein (or fragment). This information is considered to be commercially sensitive.

Synonyms

IF; GIF; INF; IFMH; TCN3

Contact

 www.abclonal.com

Product Information

Source

Rabbit

Isotype

IgG

Purification

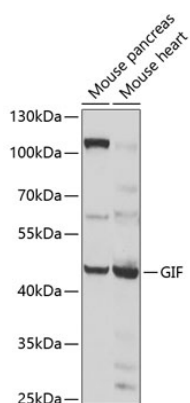
Affinity purification

Storage

Store at -20°C. Avoid freeze / thaw cycles.

Buffer: PBS with 0.02% sodium azide, 50% glycerol, pH7.3.

Validation Data



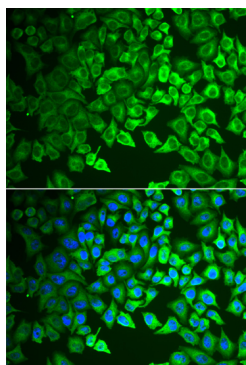
Western blot analysis of various lysates using GIF Rabbit pAb (A6914) at 1:1000 dilution. Secondary antibody: HRP-conjugated Goat anti-Rabbit IgG (H+L) (AS014) at 1:10000 dilution.

Lysates/proteins: 25µg per lane.

Blocking buffer: 3% nonfat dry milk in TBST.

Detection: ECL Basic Kit (RM00020).

Exposure time: 1s.



Immunofluorescence analysis of A549 cells using GIF Rabbit pAb (A6914). Secondary antibody: Cy3-conjugated Goat anti-Rabbit IgG (H+L) (AS007) at 1:500 dilution. Blue: DAPI for nuclear staining.