

A6977

Leader in Biomolecular Solutions for Life Science



## CCL8 Rabbit pAb

Catalog No.: A6977

1 Publications

### Basic Information

#### Observed MW

Refer to figures

#### Calculated MW

11kDa

#### Category

Polyclonal Antibody

#### Applications

IHC-P, ELISA

#### Cross-Reactivity

Human, Mouse

### Background

This antimicrobial gene is one of several chemokine genes clustered on the q-arm of chromosome 17. Chemokines form a superfamily of secreted proteins involved in immunoregulatory and inflammatory processes. The superfamily is divided into four subfamilies based on the arrangement of N-terminal cysteine residues of the mature peptide. This chemokine is a member of the CC subfamily which is characterized by two adjacent cysteine residues. This cytokine displays chemotactic activity for monocytes, lymphocytes, basophils and eosinophils. By recruiting leukocytes to sites of inflammation this cytokine may contribute to tumor-associated leukocyte infiltration and to the antiviral state against HIV infection.

### Recommended Dilutions

IHC-P 1:50 - 1:100

ELISA Recommended starting concentration is 1 µg/mL. Please optimize the concentration based on your specific assay requirements.

### Immunogen Information

#### Gene ID

6355

#### Swiss Prot

P80075

#### Immunogen

Synthetic peptide. This information is considered to be commercially sensitive.

#### Synonyms

HC14; MCP2; MCP-2; SCYA8; SCYA10; CCL8

### Contact



[www.abclonal.com](http://www.abclonal.com)

### Product Information

#### Source

Rabbit

#### Isotype

IgG

#### Purification

Affinity purification

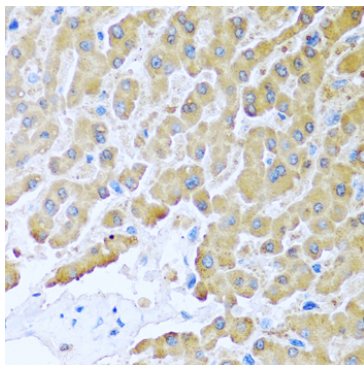
#### Storage

Store at -20°C. Avoid freeze / thaw cycles.

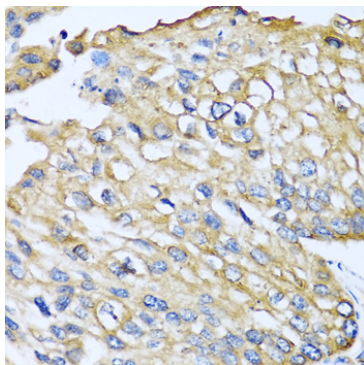
Buffer: PBS with 0.09% Sodium azide, 50% glycerol, pH 7.3.

## Validation Data

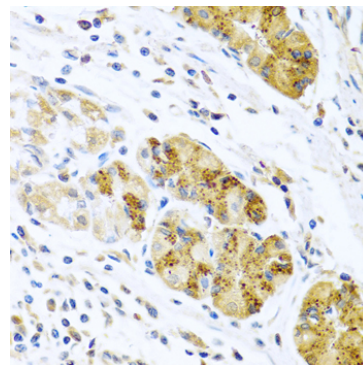
---



Immunohistochemistry analysis of paraffin-embedded Human liver using CCL8 Rabbit pAb (A6977) at dilution of 1:100 (40x lens). Microwave antigen retrieval performed with 0.01M PBS Buffer (pH 7.2) prior to IHC staining.



Immunohistochemistry analysis of paraffin-embedded Human prostate cancer using CCL8 Rabbit pAb (A6977) at dilution of 1:100 (40x lens). Microwave antigen retrieval performed with 0.01M PBS Buffer (pH 7.2) prior to IHC staining.



Immunohistochemistry analysis of paraffin-embedded Human stomach using CCL8 Rabbit pAb (A6977) at dilution of 1:100 (40x lens). Microwave antigen retrieval performed with 0.01M PBS Buffer (pH 7.2) prior to IHC staining.