

A7052

Leader in Biomolecular Solutions for Life Science



DNAJB6 Rabbit pAb

Catalog No.: A7052

Basic Information

Observed MW

38kDa

Calculated MW

36kDa

Category

Polyclonal Antibody

Applications

WB,IHC-P,IF/ICC,ELISA

Cross-Reactivity

Human,Mouse,Rat

Background

This gene encodes a member of the DNAJ protein family. DNAJ family members are characterized by a highly conserved amino acid stretch called the 'J-domain' and function as one of the two major classes of molecular chaperones involved in a wide range of cellular events, such as protein folding and oligomeric protein complex assembly. This family member may also play a role in polyglutamine aggregation in specific neurons. Alternative splicing of this gene results in multiple transcript variants; however, not all variants have been fully described.

Recommended Dilutions

WB 1:500 - 1:2000

IHC-P 1:50 - 1:200

IF/ICC 1:50 - 1:100

ELISA Recommended starting concentration is 1 µg/mL. Please optimize the concentration based on your specific assay requirements.

Immunogen Information

Gene ID

10049

Swiss Prot

O75190

Immunogen

Recombinant protein (or fragment). This information is considered to be commercially sensitive.

Synonyms

DJ4; MRJ; DnaJ; HSJ2; HHDJ1; HSJ-2; MSJ-1; LGMD1D; LGMD1E; LGMD1F; DNAJB6

Product Information

Source

Rabbit

Isotype

IgG

Purification

Affinity purification

Storage

Store at -20°C. Avoid freeze / thaw cycles.

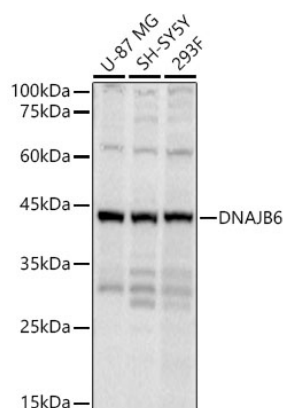
Buffer: PBS containing 50% glycerol, preserved with proclin300 or sodium azide (as specified on the Certificate of Analysis), pH 7.3.

Contact

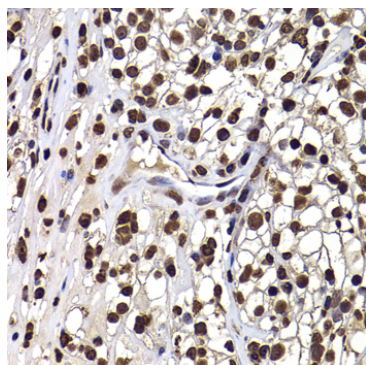


www.abclonal.com

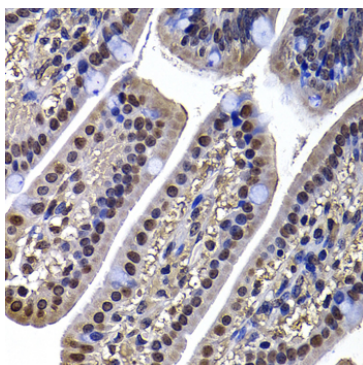
Validation Data



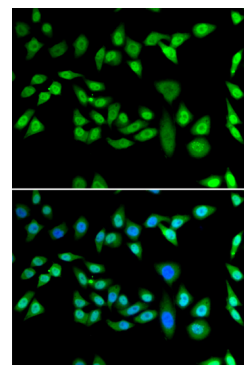
Western blot analysis of various lysates using DNAJB6 Rabbit pAb (A7052) at 1:1000 dilution.
 Secondary antibody: HRP-conjugated Goat anti-Rabbit IgG (H+L) (AS014) at 1:10000 dilution.
 Lysates / proteins: 25 µg per lane.
 Blocking buffer: 3 % nonfat dry milk in TBST.
 Detection: ECL Basic Kit (RM00020).
 Exposure time: 10s.



Immunohistochemistry analysis of paraffin-embedded Human kidney cancer using DNAJB6 Rabbit pAb (A7052) at dilution of 1:100 (40x lens). Microwave antigen retrieval performed with 0.01M PBS Buffer (pH 7.2) prior to IHC staining.



Immunohistochemistry analysis of paraffin-embedded Mouse ileum using DNAJB6 Rabbit pAb (A7052) at dilution of 1:100 (40x lens). Microwave antigen retrieval performed with 0.01M PBS Buffer (pH 7.2) prior to IHC staining.



Immunofluorescence analysis of U2OS cells using DNAJB6 Rabbit pAb (A7052). Secondary antibody: Cy3-conjugated Goat anti-Rabbit IgG (H+L) (AS007) at 1:500 dilution. Blue: DAPI for nuclear staining.