

A7180

Leader in Biomolecular Solutions for Life Science



## ELF4 Rabbit pAb

Catalog No.: A7180

### Basic Information

#### Observed MW

#### Calculated MW

71kDa

#### Category

Polyclonal Antibody

#### Applications

IF/ICC,ELISA

#### Cross-Reactivity

Human

### Background

The protein encoded by this gene is a transcriptional activator that binds and activates the promoters of the CSF2, IL3, IL8, and PRF1 genes. The encoded protein is involved in natural killer cell development and function, innate immunity, and induction of cell cycle arrest in naive CD8+ cells. Two transcript variants encoding the same protein have been found for this gene.

### Recommended Dilutions

IF/ICC 1:50 - 1:100

ELISA Recommended starting concentration is 1 µg/mL. Please optimize the concentration based on your specific assay requirements.

### Immunogen Information

**Gene ID**  
2000

**Swiss Prot**  
Q99607

#### Immunogen

Recombinant protein (or fragment). This information is considered to be commercially sensitive.

#### Synonyms

MEF; ELFR; AIFBL2; ELF4

### Contact

 [www.abclonal.com](http://www.abclonal.com)

### Product Information

**Source**  
Rabbit

**Isotype**  
IgG

**Purification**  
Affinity purification

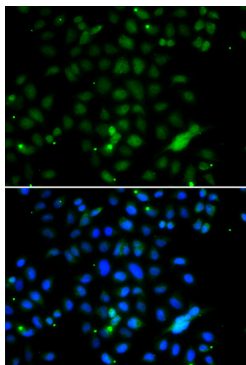
#### Storage

Store at -20°C. Avoid freeze / thaw cycles.

Buffer: PBS with 0.02% sodium azide, 50% glycerol, pH7.3.

## Validation Data

---



Immunofluorescence analysis of A549 cells using ELF4 Rabbit pAb (A7180). Secondary antibody: Cy3-conjugated Goat anti-Rabbit IgG (H+L) (AS007) at 1:500 dilution. Blue: DAPI for nuclear staining.