

A7201

Leader in Biomolecular Solutions for Life Science



N6AMT1/HEMK2 Rabbit pAb

Catalog No.: A7201

Basic Information

Observed MW

23kDa

Calculated MW

23kDa

Category

Polyclonal Antibody

Applications

WB,IF/ICC,ELISA

Cross-Reactivity

Human,Mouse,Rat

Background

This gene encodes an N(6)-adenine-specific DNA methyltransferase. The encoded enzyme may be involved in the methylation of release factor I during translation termination. This enzyme is also involved in converting the arsenic metabolite monomethylarsonous acid to the less toxic dimethylarsonic acid. Alternative splicing of this gene results in multiple transcript variants. A related pseudogene has been identified on chromosome 11.

Recommended Dilutions

WB 1:500 - 1:1000

IF/ICC 1:50 - 1:200

ELISA Recommended starting concentration is 1 µg/mL. Please optimize the concentration based on your specific assay requirements.

Immunogen Information

Gene ID

29104

Swiss Prot

Q9Y5N5

Immunogen

Synthetic peptide. This information is considered to be commercially sensitive.

Synonyms

KMT9; MTQ2; PrmC; HEMK2; N6AMT; PRED28; C21orf127; m.HsaHemK2P; N6AMT1/HEMK2

Contact

 www.abclonal.com

Product Information

Source

Rabbit

Isotype

IgG

Purification

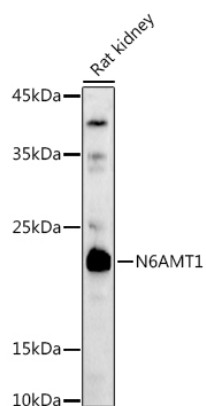
Affinity purification

Storage

Store at -20°C. Avoid freeze / thaw cycles.

Buffer: PBS with 0.05% proclin300,50% glycerol,pH7.3.

Validation Data



Western blot analysis of lysates from Rat kidney, using N6AMT1/HEMK2 Rabbit pAb (A7201) at 1:1000 dilution.

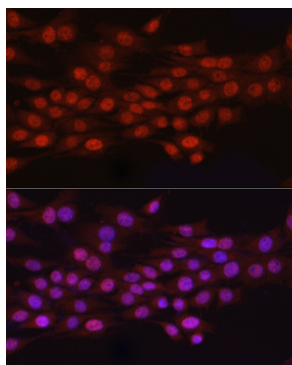
Secondary antibody: HRP-conjugated Goat anti-Rabbit IgG (H+L) (AS014) at 1:10000 dilution.

Lysates/proteins: 25µg per lane.

Blocking buffer: 3% nonfat dry milk in TBST.

Detection: ECL Basic Kit (RM00020).

Exposure time: 90s.



Immunofluorescence analysis of PC-12 cells using N6AMT1/HEMK2 Rabbit pAb (A7201) at dilution of 1:100 (40x lens). Secondary antibody: Cy3-conjugated Goat anti-Rabbit IgG (H+L) (AS007) at 1:500 dilution. Blue: DAPI for nuclear staining.