

A7206

Leader in Biomolecular Solutions for Life Science



PECR Rabbit pAb

Catalog No.: A7206

1 Publications

Basic Information

Observed MW

33kDa

Calculated MW

33kDa

Category

Polyclonal Antibody

Applications

WB,ELISA

Cross-Reactivity

Mouse

Background

Enables signaling receptor binding activity and trans-2-enoyl-CoA reductase (NADPH) activity. Involved in phytol metabolic process. Located in peroxisome.

Recommended Dilutions

WB 1:500 - 1:2000

ELISA Recommended starting concentration is 1 µg/mL. Please optimize the concentration based on your specific assay requirements.

Immunogen Information

Gene ID

55825

Swiss Prot

Q9BY49

Immunogen

Recombinant protein (or fragment). This information is considered to be commercially sensitive.

Synonyms

TERP; DCRRP; PVIARL; HPDHASE; SDR29C1; HSA250303; PECR

Contact

 www.abclonal.com

Product Information

Source

Rabbit

Isotype

IgG

Purification

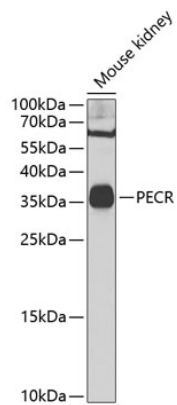
Affinity purification

Storage

Store at -20°C. Avoid freeze / thaw cycles.

Buffer: PBS with 0.02% sodium azide, 50% glycerol, pH7.3.

Validation Data



Western blot analysis of lysates from mouse kidney, using PECR Rabbit pAb (A7206) at 1:1000 dilution.

Secondary antibody: HRP-conjugated Goat anti-Rabbit IgG (H+L) (AS014) at 1:10000 dilution.

Lysates/proteins: 25µg per lane.

Blocking buffer: 3% nonfat dry milk in TBST.

Detection: ECL Basic Kit (RM00020).

Exposure time: 30s.