

A7211

Leader in Biomolecular Solutions for Life Science



## SAT2 Rabbit pAb

Catalog No.: A7211

### Basic Information

**Observed MW**

19kDa

**Calculated MW**

19kDa

**Category**

Polyclonal Antibody

**Applications**

WB,IF/ICC,ELISA

**Cross-Reactivity**

Human,Rat

### Background

Enables diamine N-acetyltransferase activity and identical protein binding activity. Involved in polyamine metabolic process. Located in extracellular exosome.

### Recommended Dilutions

**WB** 1:100 - 1:500

**IF/ICC** 1:50 - 1:100

**ELISA** Recommended starting concentration is 1 µg/mL. Please optimize the concentration based on your specific assay requirements.

### Immunogen Information

**Gene ID**

112483

**Swiss Prot**

Q96F10

**Immunogen**

Recombinant protein (or fragment). This information is considered to be commercially sensitive.

**Synonyms**

SSAT2; SSAT-2; SAT2

### Contact



[www.abclonal.com](http://www.abclonal.com)

### Product Information

**Source**

Rabbit

**Isotype**

IgG

**Purification**

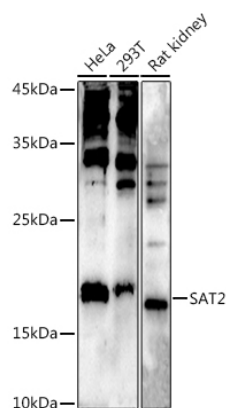
Affinity purification

**Storage**

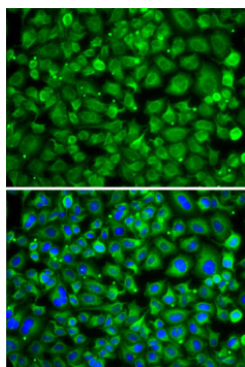
Store at -20°C. Avoid freeze / thaw cycles.

Buffer: PBS with 0.02% sodium azide, 50% glycerol, pH7.3.

## Validation Data



Western blot analysis of various lysates using (A7211) at 1:500 dilution.  
Secondary antibody: HRP-conjugated Goat anti-Rabbit IgG (H+L) (AS014) at 1:10000 dilution.  
Lysates/proteins: 25µg per lane.  
Blocking buffer: 3% nonfat dry milk in TBST.  
Detection: ECL Enhanced Kit (RM00021).  
Exposure time: 90s.



Immunofluorescence analysis of A-549 cells using SAT2 Rabbit pAb (A7211). Secondary antibody: Cy3-conjugated Goat anti-Rabbit IgG (H+L) (AS007) at 1:500 dilution. Blue: DAPI for nuclear staining.