

A7275

Leader in Biomolecular Solutions for Life Science



BRCC2/BLID Rabbit pAb

Catalog No.: A7275

1 Publications

Basic Information

Observed MW

16kDa

Calculated MW

12kDa

Category

Polyclonal Antibody

Applications

WB,IF/ICC,ELISA

Cross-Reactivity

Human,Mouse,Rat

Background

This gene encodes a BH3-like motif containing protein involved in cell death. The encoded protein may induce apoptosis in a caspase-dependent manner. The protein is localized in both the cytoplasm and the mitochondrion.

Recommended Dilutions

WB 1:500 - 1:1000

IF/ICC 1:50 - 1:100

ELISA Recommended starting concentration is 1 µg/mL. Please optimize the concentration based on your specific assay requirements.

Immunogen Information

Gene ID

414899

Swiss Prot

Q8IZY5

Immunogen

Recombinant protein (or fragment). This information is considered to be commercially sensitive.

Synonyms

BRCC2; BRCC2/BLID

Contact

 www.abclonal.com

Product Information

Source

Rabbit

Isotype

IgG

Purification

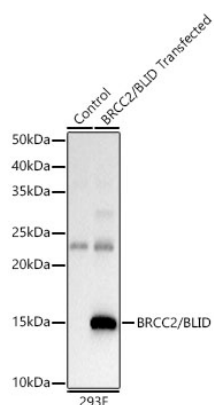
Affinity purification

Storage

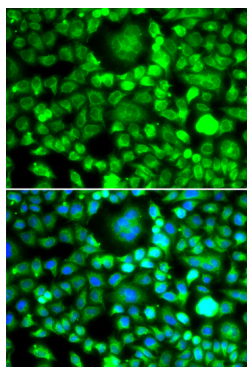
Store at -20°C. Avoid freeze / thaw cycles.

Buffer: PBS containing 50% glycerol, preserved with proclin300 or sodium azide (as specified on the Certificate of Analysis), pH 7.3.

Validation Data



Western blot analysis of lysates from wild type (WT) and 293T cells transfected with BRCC2/BLID, using BRCC2/BLID Rabbit pAb (A7275) at 1:400 dilution. Secondary antibody: HRP-conjugated Goat anti-Rabbit IgG (H+L) (AS014) at 1:10000 dilution. Lysates/proteins: 25µg per lane. Blocking buffer: 3% nonfat dry milk in TBST. Detection: ECL Basic Kit (RM00020). Exposure time: 1s.



Immunofluorescence analysis of MCF-7 cells using BRCC2/BLID Rabbit pAb (A7275). Secondary antibody: Cy3-conjugated Goat anti-Rabbit IgG (H+L) (AS007) at 1:500 dilution. Blue: DAPI for nuclear staining.