

A7283

Leader in Biomolecular Solutions for Life Science



# GOLPH2 Rabbit pAb

Catalog No.: A7283

## Basic Information

### Observed MW

75kDa

### Calculated MW

45kDa

### Category

Polyclonal Antibody

### Applications

WB,IHC-P,IF/ICC,ELISA

### Cross-Reactivity

Human,Mouse,Rat

## Background

The Golgi complex plays a key role in the sorting and modification of proteins exported from the endoplasmic reticulum. The protein encoded by this gene is a type II Golgi transmembrane protein. It processes proteins synthesized in the rough endoplasmic reticulum and assists in the transport of protein cargo through the Golgi apparatus. The expression of this gene has been observed to be upregulated in response to viral infection. Alternatively spliced transcript variants encoding the same protein have been described for this gene.

## Recommended Dilutions

**WB** 1:500 - 1:1000

**IHC-P** 1:50 - 1:200

**IF/ICC** 1:50 - 1:200

**ELISA** Recommended starting concentration is 1 µg/mL. Please optimize the concentration based on your specific assay requirements.

## Immunogen Information

### Gene ID

51280

### Swiss Prot

Q8NBJ4

### Immunogen

Recombinant protein (or fragment). This information is considered to be commercially sensitive.

### Synonyms

GP73; HEL46; GOLPH2; C9orf155; PSEC0257; bA379P1.3

## Product Information

### Source

Rabbit

### Isotype

IgG

### Purification

Affinity purification

### Storage

Store at -20°C. Avoid freeze / thaw cycles.

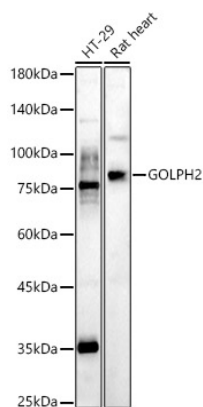
Buffer: PBS containing 50% glycerol, preserved with proclin300 or sodium azide (as specified on the Certificate of Analysis), pH 7.3.

## Contact



[www.abclonal.com](http://www.abclonal.com)

## Validation Data



Western blot analysis of various lysates, using GOLPH2 Rabbit pAb (A7283) at 1:1000 dilution.

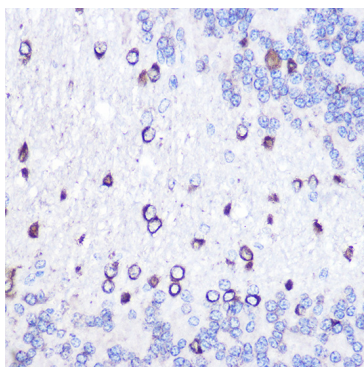
Secondary antibody: HRP-conjugated Goat anti-Rabbit IgG (H+L) (AS014) at 1:10000 dilution.

Lysates/proteins: 25µg per lane.

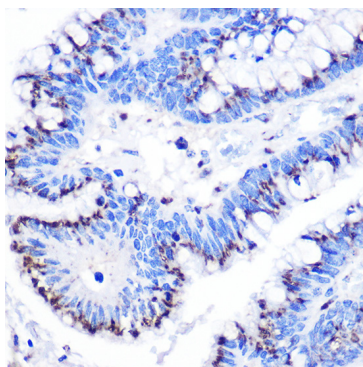
Blocking buffer: 3% nonfat dry milk in TBST.

Detection: ECL Basic Kit (RM00020).

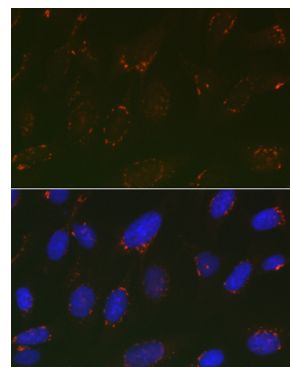
Exposure time: 180s.



Immunohistochemistry analysis of paraffin-embedded Rat brain using GOLPH2 Rabbit pAb (A7283) at dilution of 1:100 (40x lens). Microwave antigen retrieval performed with 0.01M Tris/EDTA Buffer (pH 9.0) prior to IHC staining.



Immunohistochemistry analysis of paraffin-embedded Human colon carcinoma using GOLPH2 Rabbit pAb (A7283) at dilution of 1:100 (40x lens). Microwave antigen retrieval performed with 0.01M Tris/EDTA Buffer (pH 9.0) prior to IHC staining.



Immunofluorescence analysis of U2OS cells using GOLPH2 Rabbit pAb (A7283) at dilution of 1:100 (40x lens). Secondary antibody: Cy3-conjugated Goat anti-Rabbit IgG (H+L) (AS007) at 1:500 dilution. Blue: DAPI for nuclear staining.