

A7407

Leader in Biomolecular Solutions for Life Science



## SPIN2B Rabbit pAb

Catalog No.: A7407

### Basic Information

#### Observed MW

29kDa

#### Calculated MW

29kDa

#### Category

Polyclonal Antibody

#### Applications

WB,ELISA

#### Cross-Reactivity

Human,Mouse,Rat

### Background

Enables methylated histone binding activity. Predicted to be involved in regulation of transcription, DNA-templated. Located in cytosol and nucleoplasm.

### Recommended Dilutions

**WB** 1:500 - 1:2000

**ELISA** Recommended starting concentration is 1 µg/mL. Please optimize the concentration based on your specific assay requirements.

### Immunogen Information

#### Gene ID

474343

#### Swiss Prot

Q9BPZ2

#### Immunogen

Recombinant protein (or fragment). This information is considered to be commercially sensitive.

#### Synonyms

SPIN-2; TDRD26; SPIN-2B; dJ323P24.2; SPIN2\_duplicate; SPIN2B

### Contact



[www.abclonal.com](http://www.abclonal.com)

### Product Information

#### Source

Rabbit

#### Isotype

IgG

#### Purification

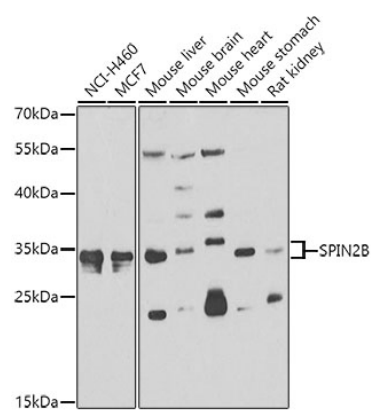
Affinity purification

#### Storage

Store at -20°C. Avoid freeze / thaw cycles.

Buffer: PBS with 0.02% sodium azide, 50% glycerol, pH 7.3.

# Validation Data



Western blot analysis of various lysates using SPIN2B Rabbit pAb (A7407) at 1:1000 dilution.  
Secondary antibody: HRP-conjugated Goat anti-Rabbit IgG (H+L) (AS014) at 1:10000 dilution.  
Lysates/proteins: 25µg per lane.  
Blocking buffer: 3% nonfat dry milk in TBST.  
Detection: ECL Enhanced Kit (RM00021).  
Exposure time: 90s.