

A7416

Leader in Biomolecular Solutions for Life Science



## SIRT6 Rabbit pAb

Catalog No.: A7416

6 Publications

### Basic Information

#### Observed MW

39-45kDa

#### Calculated MW

39kDa

#### Category

Polyclonal Antibody

#### Applications

WB, ELISA

#### Cross-Reactivity

Human, Mouse

### Background

Enables several functions, including NAD(P)<sup>+</sup>-protein-arginine ADP-ribosyltransferase activity; NAD-dependent histone deacetylase activity (H3-K9 specific); and transcription corepressor activity. Involved in several processes, including cellular protein modification process; negative regulation of nucleobase-containing compound metabolic process; and positive regulation of cell population proliferation. Located in nucleus. Is expressed in several structures, including alimentary system; central nervous system; gonad; musculature; and retina. Used to study progeria. Orthologous to human SIRT6 (sirtuin 6).

### Recommended Dilutions

**WB** 1:500 - 1:2000

**ELISA** Recommended starting concentration is 1 µg/mL. Please optimize the concentration based on your specific assay requirements.

### Immunogen Information

#### Gene ID

50721

#### Swiss Prot

Q8N6T7

#### Immunogen

Synthetic peptide. This information is considered to be commercially sensitive.

#### Synonyms

Sir2l6; mSIRT6; 2810449N18Rik; SIRT6

### Contact



[www.abclonal.com](http://www.abclonal.com)

### Product Information

#### Source

Rabbit

#### Isotype

IgG

#### Purification

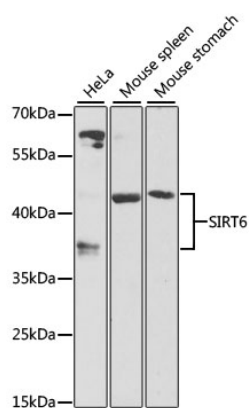
Affinity purification

#### Storage

Store at -20°C. Avoid freeze / thaw cycles.

Buffer: PBS with 0.02% sodium azide, 50% glycerol, pH 7.3.

## Validation Data



Western blot analysis of various lysates using SIRT6 Rabbit pAb (A7416) at 1:1000 dilution.

Secondary antibody: HRP-conjugated Goat anti-Rabbit IgG (H+L) (AS014) at 1:10000 dilution.

Lysates/proteins: 25µg per lane.

Blocking buffer: 3% nonfat dry milk in TBST.

Detection: ECL Basic Kit (RM00020).

Exposure time: 30s.