

A7419

Leader in Biomolecular Solutions for Life Science



SLC8A1 Rabbit pAb

Catalog No.: A7419

1 Publications

Basic Information

Observed MW

109kDa

Calculated MW

109kDa

Category

Polyclonal Antibody

Applications

WB,ELISA

Cross-Reactivity

Human

Background

In cardiac myocytes, Ca^{2+} concentrations alternate between high levels during contraction and low levels during relaxation. The increase in Ca^{2+} concentration during contraction is primarily due to release of Ca^{2+} from intracellular stores. However, some Ca^{2+} also enters the cell through the sarcolemma (plasma membrane). During relaxation, Ca^{2+} is sequestered within the intracellular stores. To prevent overloading of intracellular stores, the Ca^{2+} that entered across the sarcolemma must be extruded from the cell. The Na^{+} - Ca^{2+} exchanger is the primary mechanism by which the Ca^{2+} is extruded from the cell during relaxation. In the heart, the exchanger may play a key role in digitalis action. The exchanger is the dominant mechanism in returning the cardiac myocyte to its resting state following excitation.

Recommended Dilutions

WB 1:500 - 1:2000

ELISA Recommended starting concentration is 1 $\mu\text{g/mL}$. Please optimize the concentration based on your specific assay requirements.

Immunogen Information

Gene ID

6546

Swiss Prot

P32418

Immunogen

Recombinant protein (or fragment). This information is considered to be commercially sensitive.

Synonyms

NCX1; SLC8A1

Contact

 www.abclonal.com

Product Information

Source

Rabbit

Isotype

IgG

Purification

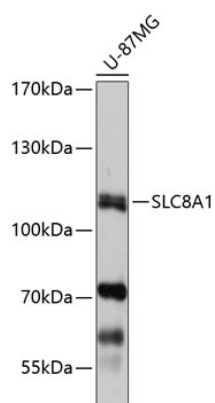
Affinity purification

Storage

Store at -20°C . Avoid freeze / thaw cycles.

Buffer: PBS with 0.01% thimerosal, 50% glycerol, pH7.3.

Validation Data



Western blot analysis of lysates from U-87MG cells, using SLC8A1 Rabbit pAb (A7419) at 1:1000 dilution.

Secondary antibody: HRP-conjugated Goat anti-Rabbit IgG (H+L) (AS014) at 1:10000 dilution.

Lysates/proteins: 25µg per lane.

Blocking buffer: 3% nonfat dry milk in TBST.

Detection: ECL Basic Kit (RM00020).

Exposure time: 1s.