

A7568

Leader in Biomolecular Solutions for Life Science



CCL3 Rabbit pAb

Catalog No.: A7568 **6 Publications**

Basic Information

Observed MW

11kDa

Calculated MW

10kDa

Category

Polyclonal Antibody

Applications

WB,ELISA

Cross-Reactivity

Human,Mouse,Rat

Background

This locus represents a small inducible cytokine. The encoded protein, also known as macrophage inflammatory protein 1 alpha, plays a role in inflammatory responses through binding to the receptors CCR1, CCR4 and CCR5. Polymorphisms at this locus may be associated with both resistance and susceptibility to infection by human immunodeficiency virus type 1.

Recommended Dilutions

WB 1:500 - 1:1000

ELISA Recommended starting concentration is 1 µg/mL. Please optimize the concentration based on your specific assay requirements.

Immunogen Information

Gene ID

6348

Swiss Prot

P10147

Immunogen

Synthetic peptide. This information is considered to be commercially sensitive.

Synonyms

MIP1A; SCYA3; G0S19-1; LD78ALPHA; MIP-1-alpha; CCL3

Contact

 www.abclonal.com

Product Information

Source

Rabbit

Isotype

IgG

Purification

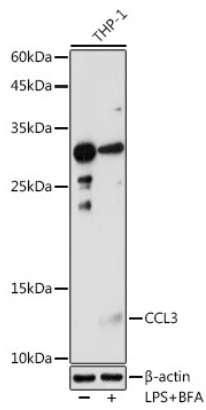
Affinity purification

Storage

Store at -20°C. Avoid freeze / thaw cycles.

Buffer: PBS with 0.09% Sodium azide,50% glycerol,pH7.3.

Validation Data



Western blot analysis of lysates from THP-1 cells, using CCL3 Rabbit pAb (A7568) at 1:1000 dilution. THP-1 cells were treated with LPS for 6 hours and Brefeldin A for 3 hours of stimulation.

Secondary antibody: HRP-conjugated Goat anti-Rabbit IgG (H+L) (AS014) at 1:10000 dilution.

Lysates/proteins: 25 μ g per lane.

Blocking buffer: 3% nonfat dry milk in TBST.

Detection: ECL Enhanced Kit (RM00021).

Exposure time: 180s.