

A7729

Leader in Biomolecular Solutions for Life Science



## SLC4A2 Rabbit pAb

Catalog No.: A7729

2 Publications

### Basic Information

#### Observed MW

140kDa

#### Calculated MW

137kDa

#### Category

Polyclonal Antibody

#### Applications

WB, ELISA

#### Cross-Reactivity

Human

### Background

This gene encodes a member of the anion exchanger family of membrane transport proteins. The encoded protein regulates intracellular pH, biliary bicarbonate secretion, and chloride uptake. Reduced expression of this gene may be associated with primary biliary cirrhosis (PBC) in human patients, while differential expression of this gene may be associated with malignant hepatocellular carcinoma, colon and gastric cancers.

### Recommended Dilutions

**WB** 1:500 - 1:2000

**ELISA** Recommended starting concentration is 1 µg/mL. Please optimize the concentration based on your specific assay requirements.

### Immunogen Information

#### Gene ID

6522

#### Swiss Prot

P04920

#### Immunogen

Recombinant protein (or fragment). This information is considered to be commercially sensitive.

#### Synonyms

AE2; HKB3; BND3L; NBND3; EPB3L1; SLC4A2

### Contact



[www.abclonal.com](http://www.abclonal.com)

### Product Information

#### Source

Rabbit

#### Isotype

IgG

#### Purification

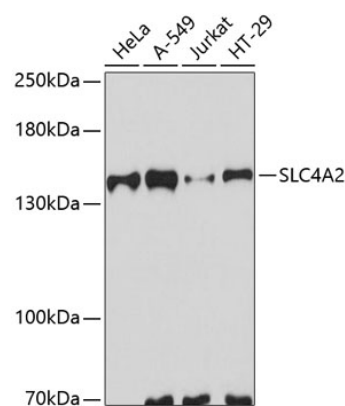
Affinity purification

#### Storage

Store at -20°C. Avoid freeze / thaw cycles.

Buffer: PBS with 0.01% thimerosal, 50% glycerol, pH 7.3.

## Validation Data



Western blot analysis of various lysates using SLC4A2 Rabbit pAb (A7729) at 1:3000 dilution.  
Secondary antibody: HRP-conjugated Goat anti-Rabbit IgG (H+L) (AS014) at 1:10000 dilution.  
Lysates/proteins: 25µg per lane.  
Blocking buffer: 3% nonfat dry milk in TBST.  
Detection: ECL Basic Kit (RM00020).  
Exposure time: 30s.