

A7836

Leader in Biomolecular Solutions for Life Science



# RUFY1 Rabbit pAb

Catalog No.: A7836

## Basic Information

### Observed MW

80kDa

### Calculated MW

80kDa

### Category

Polyclonal Antibody

### Applications

WB,ELISA

### Cross-Reactivity

Mouse,Rat

## Background

This gene encodes a protein that contains a RUN domain and a FYVE-type zinc finger domain. The encoded protein binds to phosphatidylinositol-3-phosphate (PI3P) and plays a role in early endosomal trafficking, tethering and fusion through interactions with small GTPases including Rab4, Rab5 and Rab14. Alternatively spliced transcript variants encoding multiple isoforms have been observed for this gene.

## Recommended Dilutions

**WB** 1:500 - 1:2000

**ELISA** Recommended starting concentration is 1 µg/mL. Please optimize the concentration based on your specific assay requirements.

## Immunogen Information

**Gene ID**  
80230

**Swiss Prot**  
Q96T51

### Immunogen

Recombinant protein (or fragment). This information is considered to be commercially sensitive.

### Synonyms

RABIP4; ZFYVE12; RUFY1

## Contact

 [www.abclonal.com](http://www.abclonal.com)

## Product Information

**Source**  
Rabbit

**Isotype**  
IgG

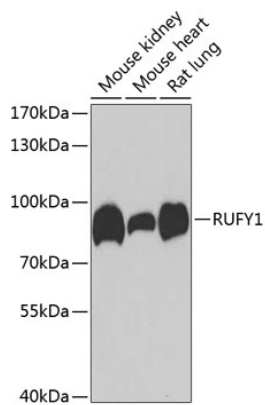
**Purification**  
Affinity purification

### Storage

Store at -20°C. Avoid freeze / thaw cycles.

Buffer: PBS with 0.02% sodium azide, 50% glycerol, pH7.3.

## Validation Data



Western blot analysis of various lysates using RUFY1 Rabbit pAb (A7836) at 1:1000 dilution.

Secondary antibody: HRP-conjugated Goat anti-Rabbit IgG (H+L) (AS014) at 1:10000 dilution.

Lysates/proteins: 25µg per lane.

Blocking buffer: 3% nonfat dry milk in TBST.

Detection: ECL Enhanced Kit (RM00021).

Exposure time: 90s.