

A7943

Leader in Biomolecular Solutions for Life Science



APOL1 Rabbit pAb

Catalog No.: A7943

Basic Information

Observed MW

Refer to figures

Calculated MW

44kDa

Category

Polyclonal Antibody

Applications

IHC-P, ELISA

Cross-Reactivity

Human, Rat

Background

This gene encodes a secreted high density lipoprotein which binds to apolipoprotein A-I. Apolipoprotein A-I is a relatively abundant plasma protein and is the major apoprotein of HDL. It is involved in the formation of most cholesteryl esters in plasma and also promotes efflux of cholesterol from cells. This apolipoprotein L family member may play a role in lipid exchange and transport throughout the body, as well as in reverse cholesterol transport from peripheral cells to the liver. Several different transcript variants encoding different isoforms have been found for this gene.

Recommended Dilutions

IHC-P 1:50 - 1:100

ELISA Recommended starting concentration is 1 µg/mL. Please optimize the concentration based on your specific assay requirements.

Immunogen Information

Gene ID

8542

Swiss Prot

O14791

Immunogen

Recombinant protein (or fragment). This information is considered to be commercially sensitive.

Synonyms

APOL; APO-L; FSGS4; APOL-I; APOL1

Contact



www.abclonal.com

Product Information

Source

Rabbit

Isotype

IgG

Purification

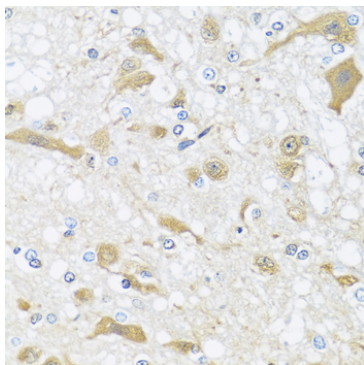
Affinity purification

Storage

Store at -20°C. Avoid freeze / thaw cycles.

Buffer: PBS with 0.02% sodium azide, 50% glycerol, pH7.3.

Validation Data



Immunohistochemistry analysis of paraffin-embedded Rat brain using APOL1 Rabbit pAb (A7943) at dilution of 1:100 (40x lens). Microwave antigen retrieval performed with 0.01M PBS Buffer (pH 7.2) prior to IHC staining.