

A8041

Leader in Biomolecular Solutions for Life Science



MYLK Rabbit pAb

Catalog No.: A8041

5 Publications

Basic Information

Observed MW

Refer to figures

Calculated MW

211kDa

Category

Polyclonal Antibody

Applications

WB,IHC-P,ELISA

Cross-Reactivity

Human,Mouse,Rat

Background

This gene, a muscle member of the immunoglobulin gene superfamily, encodes myosin light chain kinase which is a calcium/calmodulin dependent enzyme. This kinase phosphorylates myosin regulatory light chains to facilitate myosin interaction with actin filaments to produce contractile activity. This gene encodes both smooth muscle and nonmuscle isoforms. In addition, using a separate promoter in an intron in the 3' region, it encodes telokin, a small protein identical in sequence to the C-terminus of myosin light chain kinase, that is independently expressed in smooth muscle and functions to stabilize unphosphorylated myosin filaments. A pseudogene is located on the p arm of chromosome 3. Four transcript variants that produce four isoforms of the calcium/calmodulin dependent enzyme have been identified as well as two transcripts that produce two isoforms of telokin. Additional variants have been identified but lack full length transcripts.

Recommended Dilutions

WB 1:500 - 1:2000

IHC-P 1:50 - 1:100

ELISA Recommended starting concentration is 1 µg/mL. Please optimize the concentration based on your specific assay requirements.

Immunogen Information

Gene ID
4638

Swiss Prot
Q15746

Immunogen

Recombinant protein (or fragment). This information is considered to be commercially sensitive.

Synonyms

KRP; AAT7; MLCK; MLCK1; MMIHS; MYLK1; MMIHS1; MYLK-L; smMLCK; MLCK108; MLCK210; MSTP083; MYLK

Contact

 www.abclonal.com

Product Information

Source
Rabbit

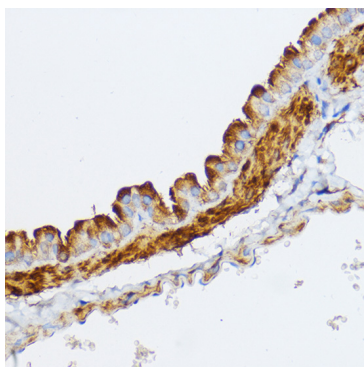
Isotype
IgG

Purification
Affinity purification

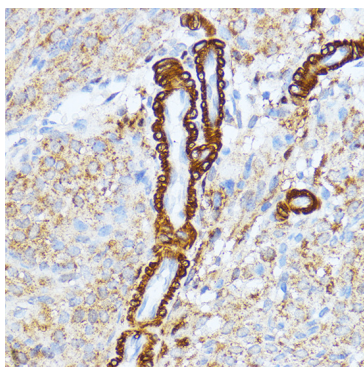
Storage

Store at -20°C. Avoid freeze / thaw cycles.
Buffer: PBS with 0.02% sodium azide, 50% glycerol, pH7.3.

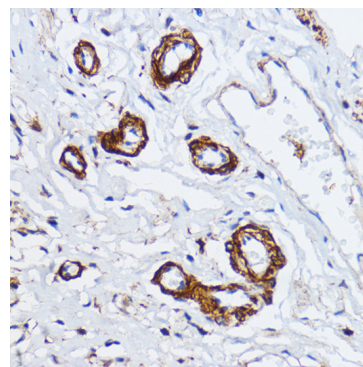
Validation Data



Immunohistochemistry analysis of paraffin-embedded Mouse lung using MYLK Rabbit pAb (A8041) at dilution of 1:100 (40x lens). Microwave antigen retrieval performed with 0.01M PBS Buffer (pH 7.2) prior to IHC staining.



Immunohistochemistry analysis of paraffin-embedded Rat ovary using MYLK Rabbit pAb (A8041) at dilution of 1:100 (40x lens). Microwave antigen retrieval performed with 0.01M PBS Buffer (pH 7.2) prior to IHC staining.



Immunohistochemistry analysis of paraffin-embedded Human esophageal using MYLK Rabbit pAb (A8041) at dilution of 1:100 (40x lens). Microwave antigen retrieval performed with 0.01M PBS Buffer (pH 7.2) prior to IHC staining.