

A8056

Leader in Biomolecular Solutions for Life Science



RFC5 Rabbit pAb

Catalog No.: A8056

Basic Information

Observed MW

38kDa

Calculated MW

38kDa

Category

Polyclonal Antibody

Applications

WB,ELISA

Cross-Reactivity

Human,Mouse,Rat

Background

This gene encodes the smallest subunit of the replication factor C complex, which consists of five distinct subunits (140, 40, 38, 37, and 36 kDa) and is required for DNA replication. This subunit interacts with the C-terminal region of proliferating cell nuclear antigen and is required to open and load proliferating cell nuclear antigen onto DNA during S phase. It is a member of the AAA+ (ATPases associated with various cellular activities) ATPase family and forms a core complex with the 38 and 40 kDa subunits that possesses DNA-dependent ATPase activity. A related pseudogene has been identified on chromosome 9. Alternative splicing results in multiple transcript variants.

Recommended Dilutions

WB 1:500 - 1:2000

ELISA Recommended starting concentration is 1 µg/mL. Please optimize the concentration based on your specific assay requirements.

Immunogen Information

Gene ID

5985

Swiss Prot

P40937

Immunogen

Recombinant protein (or fragment). This information is considered to be commercially sensitive.

Synonyms

RFC36; RFC5

Contact



www.abclonal.com

Product Information

Source

Rabbit

Isotype

IgG

Purification

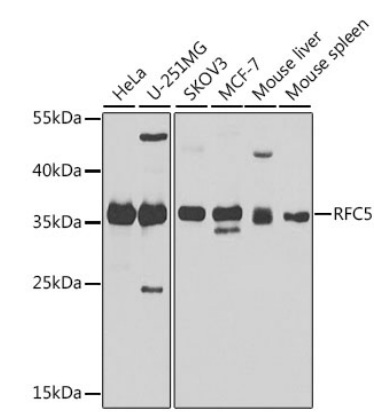
Affinity purification

Storage

Store at -20°C. Avoid freeze / thaw cycles.

Buffer: PBS with 0.02% sodium azide, 50% glycerol, pH7.3.

Validation Data



Western blot analysis of various lysates using RFC5 Rabbit pAb (A8056) at 1:1000 dilution.
Secondary antibody: HRP-conjugated Goat anti-Rabbit IgG (H+L) (AS014) at 1:10000 dilution.
Lysates/proteins: 25µg per lane.
Blocking buffer: 3% nonfat dry milk in TBST.
Detection: ECL Basic Kit (RM00020).
Exposure time: 30s.