

A8262

Leader in Biomolecular Solutions for Life Science



# CCDC92 Rabbit pAb

Catalog No.: A8262

2 Publications

## Basic Information

### Observed MW

37kDa

### Calculated MW

37kDa

### Category

Polyclonal Antibody

### Applications

WB,ELISA

### Cross-Reactivity

Human

## Background

Enables identical protein binding activity. Located in centriole; centrosome; and nucleoplasm.

## Recommended Dilutions

**WB** 1:500 - 1:2000

**ELISA** Recommended starting concentration is 1 µg/mL. Please optimize the concentration based on your specific assay requirements.

## Immunogen Information

**Gene ID**  
80212

**Swiss Prot**  
Q53HC0

### Immunogen

Recombinant protein (or fragment). This information is considered to be commercially sensitive.

**Synonyms**  
CCDC92

## Contact

 [www.abclonal.com](http://www.abclonal.com)

## Product Information

**Source**  
Rabbit

**Isotype**  
IgG

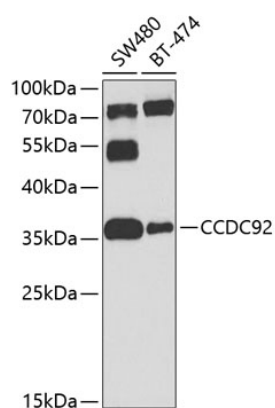
**Purification**  
Affinity purification

### Storage

Store at -20°C. Avoid freeze / thaw cycles.

Buffer: PBS with 0.02% sodium azide, 50% glycerol, pH7.3.

## Validation Data



Western blot analysis of various lysates using CCDC92 Rabbit pAb (A8262) at 1:1000 dilution.

Secondary antibody: HRP-conjugated Goat anti-Rabbit IgG (H+L) (AS014) at 1:10000 dilution.

Lysates/proteins: 25µg per lane.

Blocking buffer: 3% nonfat dry milk in TBST.

Detection: ECL Basic Kit (RM00020).

Exposure time: 60s.