

A8421

Leader in Biomolecular Solutions for Life Science



GHRHR Rabbit pAb

Catalog No.: A8421

2 Publications

Basic Information

Observed MW

45kDa

Calculated MW

47kDa

Category

Polyclonal Antibody

Applications

WB,IF/ICC,ELISA

Cross-Reactivity

Human,Mouse,Rat

Background

This gene encodes a receptor for growth hormone-releasing hormone. Binding of this hormone to the receptor leads to synthesis and release of growth hormone. Mutations in this gene have been associated with isolated growth hormone deficiency (IGHD), also known as Dwarfism of Sindh, a disorder characterized by short stature.

Recommended Dilutions

WB 1:100 - 1:500

IF/ICC 1:50 - 1:200

ELISA Recommended starting concentration is 1 µg/mL. Please optimize the concentration based on your specific assay requirements.

Immunogen Information

Gene ID

2692

Swiss Prot

Q02643

Immunogen

Recombinant protein (or fragment). This information is considered to be commercially sensitive.

Synonyms

GRFR; GHRFR; IGHD4; IGHD1B; GHRHR

Contact



www.abclonal.com

Product Information

Source

Rabbit

Isotype

IgG

Purification

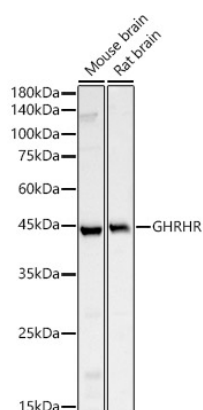
Affinity purification

Storage

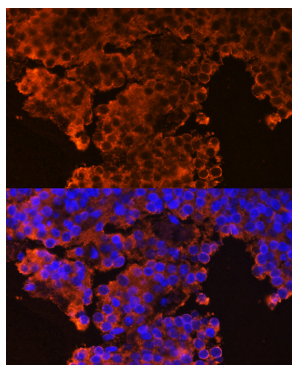
Store at -20°C. Avoid freeze / thaw cycles.

Buffer: PBS containing 50% glycerol, preserved with proclin300 or sodium azide (as specified on the Certificate of Analysis), pH 7.3.

Validation Data



Western blot analysis of various lysates, using GHRHR Rabbit pAb (A8421) at 1:400 dilution.
Secondary antibody: HRP-conjugated Goat anti-Rabbit IgG (H+L) (AS014) at 1:10000 dilution.
Lysates/proteins: 25µg per lane.
Blocking buffer: 3% nonfat dry milk in TBST.
Detection: ECL Basic Kit (RM00020).
Exposure time: 180s.



Immunofluorescence analysis of paraffin-embedded rat pituitary gland using GHRHR Rabbit pAb (A8421) at dilution of 1:100 (40x lens). Secondary antibody: Cy3-conjugated Goat anti-Rabbit IgG (H+L) (AS007) at 1:500 dilution. Blue: DAPI for nuclear staining.