

A8424

Leader in Biomolecular Solutions for Life Science



# GNRH2 Rabbit pAb

Catalog No.: A8424

2 Publications

## Basic Information

### Observed MW

20kDa

### Calculated MW

13kDa

### Category

Polyclonal Antibody

### Applications

WB,ELISA

### Cross-Reactivity

Human,Mouse,Rat

## Background

This gene is a member of the gonadotropin-releasing hormone (GnRH) gene family. Proteins encoded by members of this gene family are proteolytically cleaved to form neuropeptides which, in part, regulate reproductive functions by stimulating the production and release of the gonadotropins follicle-stimulating hormone (FSH) and luteinizing hormone (LH). The human GNRH2 gene is predicted to encode a preproprotein from which a mature neuropeptide of 10 amino acids is cleaved. However, while the human genome retains the sequence for a functional GNRH2 decapeptide, translation of the human GNRH2 gene has not yet been demonstrated and the GNRH2 gene of chimpanzees, gorilla, and Sumatran orangutan have a premature stop at codon eight of the decapeptide sequence which suggests GNRH2 was a pseudogene in the hominid lineage. The GNRH2 gene is also believed to be a pseudogene in many other mammalian species such as mouse and cow. The receptor for this gene (GNRHR2) is predicted to be a pseudogene in human as well as many other mammalian species. The closely related GNRH1 and GNRHR1 genes are functional in human and other mammals and are generally functional in vertebrates.

## Recommended Dilutions

**WB** 1:500 - 1:2000

**ELISA** Recommended starting concentration is 1 µg/mL. Please optimize the concentration based on your specific assay requirements.

## Immunogen Information

### Gene ID

2797

### Swiss Prot

O43555

### Immunogen

Recombinant protein (or fragment). This information is considered to be commercially sensitive.

### Synonyms

GnRH-II; LH-RHII; GNRH2

## Contact

 [www.abclonal.com](http://www.abclonal.com)

## Product Information

### Source

Rabbit

### Isotype

IgG

### Purification

Affinity purification

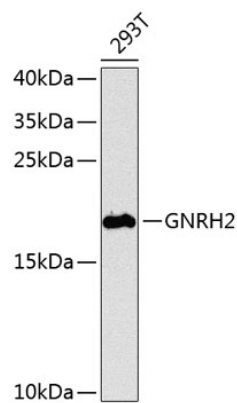
### Storage

Store at -20°C. Avoid freeze / thaw cycles.

Buffer: PBS with 0.02% sodium azide, 50% glycerol, pH7.3.

## Validation Data

---



Western blot analysis of lysates from 293T cells, using GNRH2 Rabbit pAb (A8424) at 1:1000 dilution.

Secondary antibody: HRP-conjugated Goat anti-Rabbit IgG (H+L) (AS014) at 1:10000 dilution.

Lysates/proteins: 25µg per lane.

Blocking buffer: 3% nonfat dry milk in TBST.

Detection: ECL Basic Kit (RM00020).

Exposure time: 90s.