

A8435

Leader in Biomolecular Solutions for Life Science



MARK1 Rabbit pAb

Catalog No.: A8435

2 Publications

Basic Information

Observed MW

95kDa

Calculated MW

89kDa

Category

Polyclonal Antibody

Applications

WB,IHC-P,ELISA

Cross-Reactivity

Human,Mouse

Background

Enables several functions, including ATP binding activity; phospholipid binding activity; and protein kinase activity. Involved in intracellular signal transduction and protein phosphorylation. Located in cytoplasm; dendrite; and plasma membrane.

Recommended Dilutions

WB 1:500 - 1:2000

IHC-P 1:50 - 1:200

ELISA Recommended starting concentration is 1 µg/mL. Please optimize the concentration based on your specific assay requirements.

Immunogen Information

Gene ID

4139

Swiss Prot

Q9P0L2

Immunogen

Recombinant protein (or fragment). This information is considered to be commercially sensitive.

Synonyms

MARK; Par1c; Par-1c; MARK1

Contact



www.abclonal.com

Product Information

Source

Rabbit

Isotype

IgG

Purification

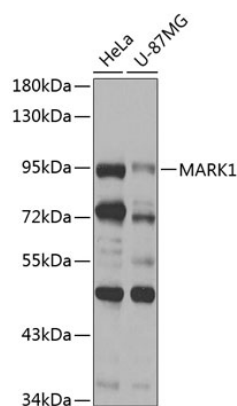
Affinity purification

Storage

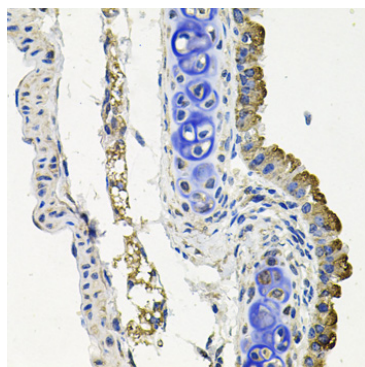
Store at -20°C. Avoid freeze / thaw cycles.

Buffer: PBS with 0.02% sodium azide, 50% glycerol, pH7.3.

Validation Data



Western blot analysis of various lysates using MARK1 Rabbit pAb (A8435) at 1:1000 dilution.
Secondary antibody: HRP-conjugated Goat anti-Rabbit IgG (H+L) (AS014) at 1:10000 dilution.
Lysates/proteins: 25µg per lane.
Blocking buffer: 3% nonfat dry milk in TBST.
Detection: ECL Basic Kit (RM00020).
Exposure time: 30s.



Immunohistochemistry analysis of paraffin-embedded Mouse lung using MARK1 Rabbit pAb (A8435) at dilution of 1:100 (40x lens).
Microwave antigen retrieval performed with 0.01M PBS Buffer (pH 7.2) prior to IHC staining.