

A8500

Leader in Biomolecular Solutions for Life Science



SMEK1 Rabbit pAb

Catalog No.: A8500

1 Publications

Basic Information

Observed MW

110kDa

Calculated MW

95kDa

Category

Polyclonal Antibody

Applications

WB,IHC-P,ELISA

Cross-Reactivity

Human,Mouse,Rat

Background

Predicted to act upstream of or within positive regulation of gluconeogenesis and protein dephosphorylation. Located in cytosol and nuclear speck.

Recommended Dilutions

WB 1:500 - 1:2000

IHC-P 1:50 - 1:200

ELISA Recommended starting concentration is 1 µg/mL. Please optimize the concentration based on your specific assay requirements.

Immunogen Information

Gene ID

55671

Swiss Prot

Q6IN85

Immunogen

Recombinant protein (or fragment). This information is considered to be commercially sensitive.

Synonyms

smk1; FLFL1; PP4R3; SMEK1; smk-1; PP4R3A; MSTP033; KIAA2010

Contact



www.abclonal.com

Product Information

Source

Rabbit

Isotype

IgG

Purification

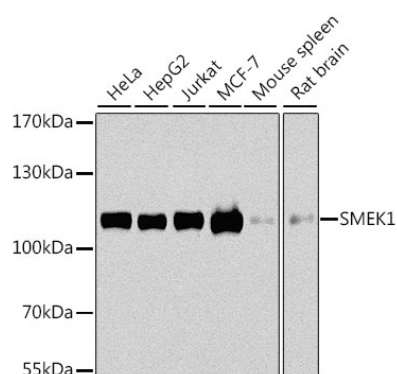
Affinity purification

Storage

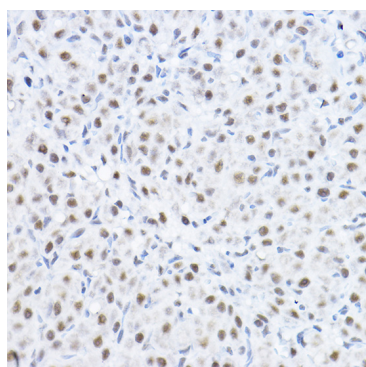
Store at -20°C. Avoid freeze / thaw cycles.

Buffer: PBS with 0.02% sodium azide, 50% glycerol, pH7.3.

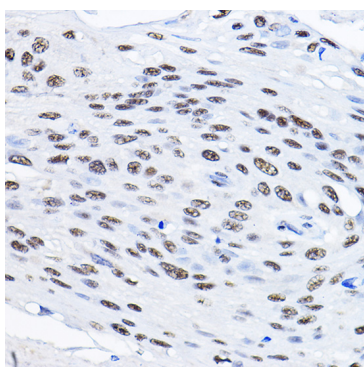
Validation Data



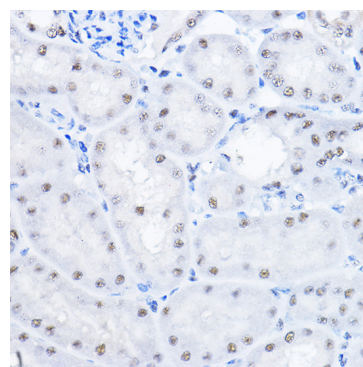
Western blot analysis of various lysates using SMEK1 Rabbit pAb (A8500) at 1:1000 dilution.
Secondary antibody: HRP-conjugated Goat anti-Rabbit IgG (H+L) (AS014) at 1:10000 dilution.
Lysates/proteins: 25µg per lane.
Blocking buffer: 3% nonfat dry milk in TBST.
Detection: ECL Basic Kit (RM00020).
Exposure time: 10s.



Immunohistochemistry analysis of paraffin-embedded Rat ovary using SMEK1 Rabbit pAb (A8500) at dilution of 1:100 (40x lens). High pressure antigen retrieval performed with 0.01M Citrate buffer (pH 6.0) prior to IHC staining.



Immunohistochemistry analysis of paraffin-embedded Human esophageal cancer using SMEK1 Rabbit pAb (A8500) at dilution of 1:100 (40x lens). High pressure antigen retrieval performed with 0.01M Citrate buffer (pH 6.0) prior to IHC staining.



Immunohistochemistry analysis of paraffin-embedded Mouse kidney using SMEK1 Rabbit pAb (A8500) at dilution of 1:100 (40x lens). High pressure antigen retrieval performed with 0.01M Citrate buffer (pH 6.0) prior to IHC staining.